



ZTEC Instruments

7715 Tiburon Street NE
Albuquerque, New Mexico 87109
(505) 342-0132
(505) 342-0222 FAX
www.ztec-inc.com

VXI Getting Started Manual

The VXI Getting Started Manual is organized into the following sections.

Introduction
Installation
The Product CD
Contacting Technical Support

Please review this document and then contact ZTEC Instruments for additional assistance if needed.

Introduction

The VXI Getting Started Manual and the product CD contain the resources needed to get you up and running with your VXI instrument. This manual is intended for customers using Microsoft Windows version 95, 88, 2000, and XP. For customers using other operating systems, please review this document and then contact ZTEC Instruments for additional assistance if needed.

Installation

Before you begin programming your VXI instrument, you must install and configure your hardware:

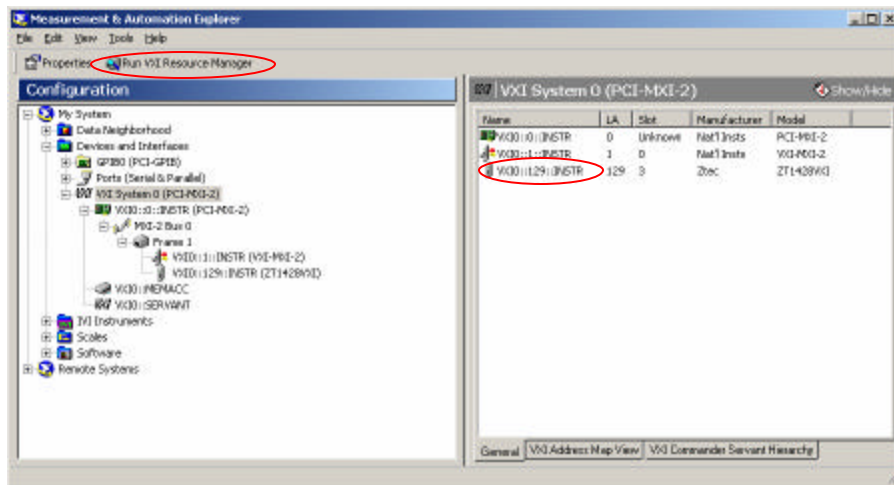
1. **Install VISA on your computer:** You must have a Virtual Instrumentation Software Architecture (VISA) installed on your system. VISA can be obtained from National Instruments or Agilent.

For customers using a National Instruments program development environment, such as LabWindows or LabVIEW, NI-VISA will most likely already be installed on your system. To check for an NI-VISA installation, open the National Instruments Measurement and Automation Explorer (NI-MAX) and check for an NI-VISA entry in the "Software" directory.

2. **Install the hardware:** Power down the VXI chassis. Insert the VXI instrument into an available slot. Once the VXI instrument is seated in the chassis, tighten the captive screw at the top and bottom of the VXI instrument into the chassis.

1. **Run Resource Manager:** Power on the VXI chassis and run the Resource Manager provided with your VXI controller. Please refer to your VXI controller documentation for more details.

If you are using a GPIB-VXI controller, Resource Manager automatically runs at power-on. If you are using a National Instruments VXI controller, Resource Manager is found in the Measurement and Automation Explorer (NI-MAX). For example, the below figure shows a ZT1428VXI properly configured using NI-MAX and a National Instruments PC-MXI-2 VXI controller. In this example, “VXI0::128::INSTR” is the VISA resource given to the ZT1428VXI.



The Product CD

A product CD is included to provide all the resources you need to get up and running with your PXI instrument. The exact contents of the product CD vary from product to product. Below describes the typical contents of the product CD:

Drivers

Depending on the VXI instrument, this directory also provides the installations and files needed for drivers in LabWindows/CVI, LabVIEW, IVI, and Basic. Driver support varies from product to product.

Examples

This directory provides any example programs provided with your VXI instrument.

Manuals

This directory provides the manuals and any other documentation related to your VXI instrument.

Utilities

If needed, this directory provides any utilities that might be needed to help configure and test your VXI instrument.

Contacting Technical Support

We are very interested to hear from you. Please do not hesitate to contact ZTEC Instruments technical support at:

ZTEC Instruments
7715 Tiburon St NE
Albuquerque, NM 87109
www.ztec-inc.com