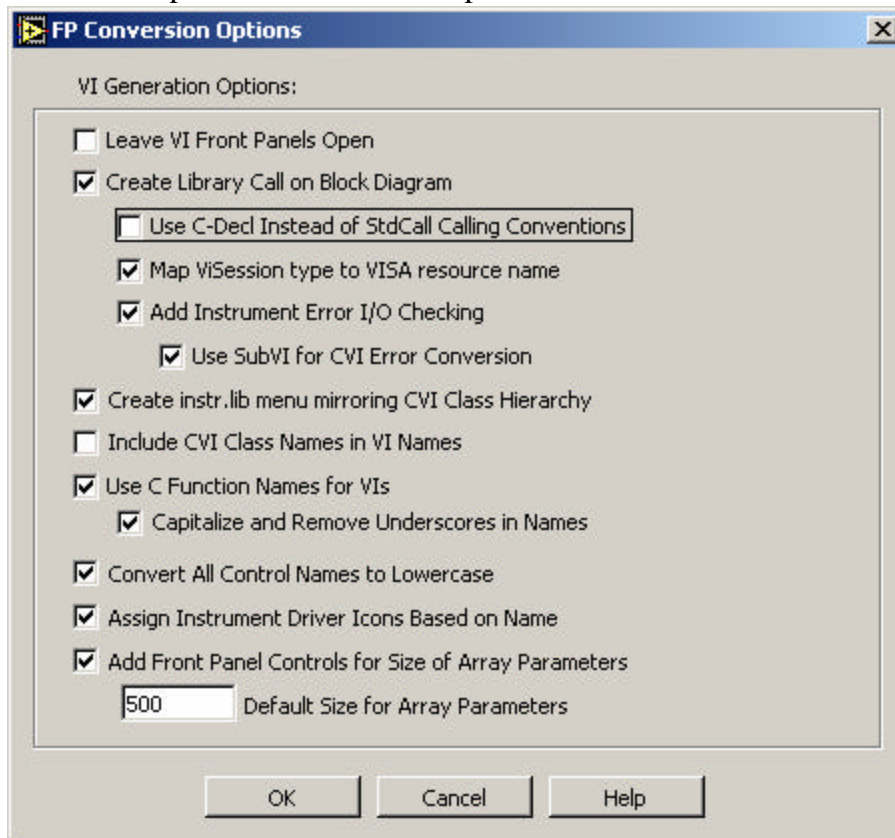


How to Import a CVI driver into LabVIEW

Start a new VI in LabVIEW.

- From the main panel menu, go to Tools>>Instrumentation>>Import CVI Instrument Driver...
- From the dialog window, select the .fp file for the CVI driver to be imported.
- Under “Select a Shared Library or DLL:” click “Browse...” and select the .dll file for the CVI driver.
- Click “Options...” and set the options as follows:



- Click “OK” on the options panel.
- Click “OK” on the converter panel.
- You should now be able to access the CVI driver functions from the diagram, under LabVIEW. The functions will be found, on your Functions Palett, under Instrument I/O>>Instrument Drivers then the name of the driver.