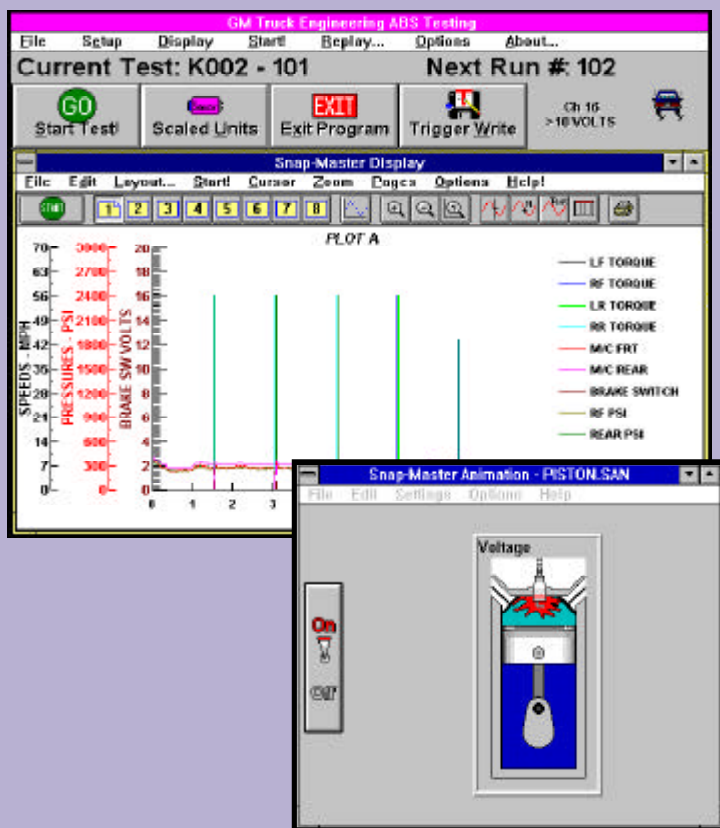




P rogrammer's Toolkit



“Our service technicians have a familiar test environment thanks to Snap-Master’s Programmer’s Toolkit.”

- Mike Waski, Van Dorn Demag



17320 12 Mile Rd., Southfield, MI 48076 U.S.A.
Phone: (248)559-5607 Fax: (248)559-8008 www.hemdata.com

Snap-Master’s™ Programmer’s Toolkit allows you to program advanced application-specific features to extend Snap-Master’s standard capabilities. The Toolkit’s philosophy is to provide a fully adaptable solution to your application by building on Snap-Master’s standard no-programming products. The Programmer’s Toolkit includes two developer tools: Front Panel Library and Data Gateway.

FRONT PANEL LIBRARY

The Front Panel Library enables you to program custom human interfaces for Snap-Master using Visual Basic or C languages. These new interfaces, referred to as “front panels”, automate a test procedure, emulate a specific piece of hardware, generate a report, and create application specific products.

The heart of the Front Panel Library is a special DLL (Dynamic Link Library) which lets you operate Snap-Master from another application, such as starting/stopping a test or adjusting a parameter. The DLL utilizes Snap-Master’s extensive DDE (Dynamic Data Exchange) capabilities containing over 250 commands and parameters. Example source code is provided, illustrating many different tasks from custom PID Control Panels to Data Animation.

The Front Panel Library increases the security of your test by limiting operator access to Snap-Master. For example, create a button or toggle switch to start a test, perform analysis routines, and save to disk without additional operator intervention. Or, create fields to ensure the operator enters specific data, such as a model number, before a test.

DATA GATEWAY

The Data Gateway provides tools for C and C++ programmers to create custom Snap-Master elements. These elements provide the tools to generate custom time and/or frequency domain analysis routines, to read and write custom data formats, or create custom data displays. All data for your custom element is processed in real-time, just like other Snap-Master elements.

Data Gateway consists of linkable libraries, example source code, standard user interface dialogs and a special DLL that handles all of the complex data management for your element. After you compile your DLL and include it with Snap-Master, it resides in the Toolbox so it looks and acts like other Snap-Master elements. Simply drag your custom icon element from the toolbox and drop it in to your instrument.