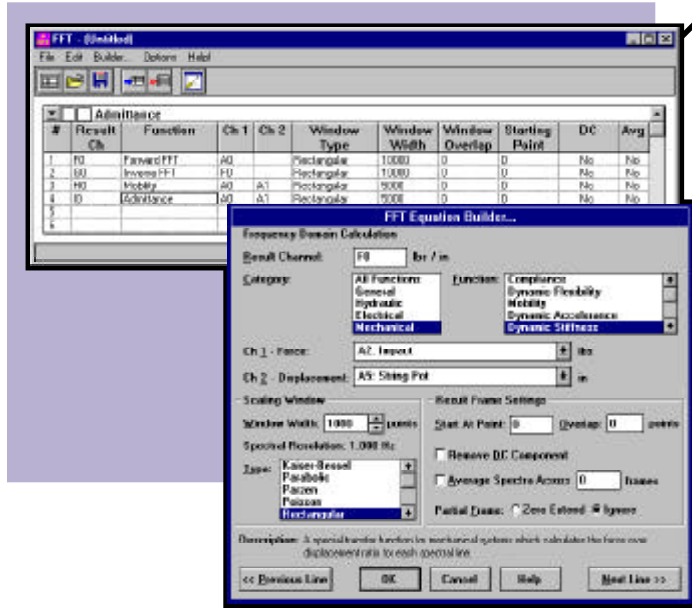


Real-World Frequency Analysis Solutions

FASTER RESULTS

Analyzing test data in the frequency domain can be daunting, so Snap-Master easily adapts frequency analysis to your area of expertise. It's designed for busy engineers and scientists, like yourself, enabling you to get your job done more quickly. So, leave the text books alone and start crunching your data immediately!



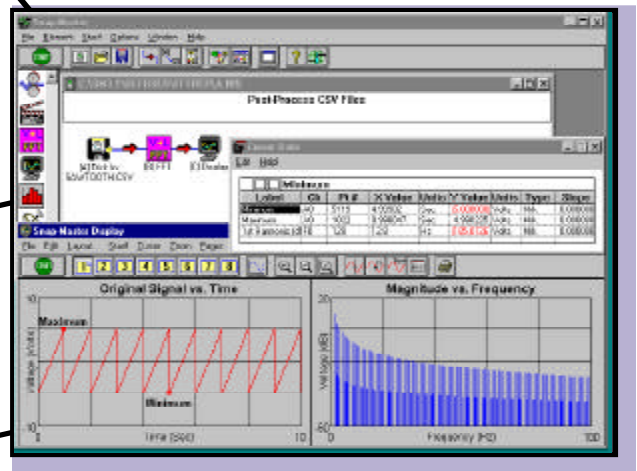
1 Setting up frequency domain calculations is easy. This table shows all of your "equations" in an organized format. Use for real-time analysis or as a post process.

2 Use the point-and-click Equation Builder to set up the calculation all at once. Just fill in the blanks - no guessing! All of the frequency domain functions are listed in the Equation Builder using names you recognize.

3 Analyze data in real-time using DDE or Snap-Master's Data Acquisition module. Or, import data files (including CSV files) for post processing.

4 The histogram element performs octave, 1/3 octave and other band analysis calculations. These calculations identify sound characteristics, aiding in the elimination of undesirable noise.

5 Powerful display options let you plot magnitude or phase results, zoom in on data, annotate specific points with text markers, and read absolute or relative data values using data cursors.



Frequency Analyzer Features

- Over 20 functions including Forward and Inverse FFTs, Auto/Cross Power Spectrum and Spectral Density, Transfer Function, Coherence, Impedance, Band Analysis, Admittance, Accelerance, Compliance, Dynamic Flexibility/Stiffness, Mobility, Transmissibility, etc.
- Display: plots (Y-T, Y-X, Semilog, Bode), histogram
- File I/O: (CSV, ASCII, Binary formats)
- Arbitrary and Function Waveform Generation (11 functions: sine, square, sawtooth, triangle, cosine, ramp, etc.)
- DDE In and Out
 "Unusually flexible DDE is a hallmark of Snap-Master for Windows..."
 - *Personal Engineering and Instrumentation News*

System Requirements

- Microsoft® Windows™ XP, 2000, NT, Me, 98
- Only 5 MB Hard Disk Space
- Pentium II or Higher



17320 12 Mile Rd., Southfield, MI 48076 U.S.A.
 Phone: (248) 559-5607 Fax: (248) 559-8008



CALL 1-800-HEM-4330 TODAY FOR YOUR FREE DEMO DISK