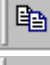
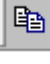


Any of the graphs in the Echem Analyst™ may be copied to another Windows application (Word, Excel,

PowerPoint) by using the copy button (). Display

the graph you wish to copy, and press . From the menu displayed, you may copy the graph to the clipboard as either a BMP image or as a Metafile. You may also copy (as text) the data used to plot the graph.

You may then open the other application and *paste* the contents of the clipboard into that application.

A bug in early releases of the Echem Analyst™ did not allow the BMP format to be copied well, but the Metafile format does work well.

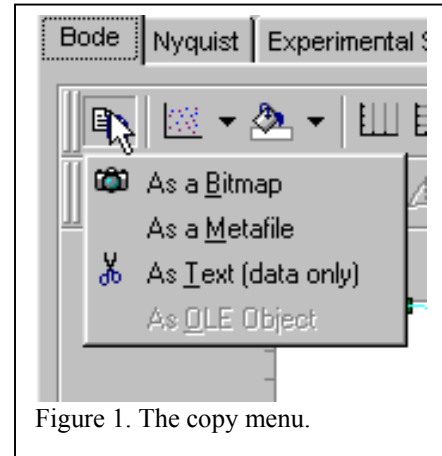


Figure 1. The copy menu.

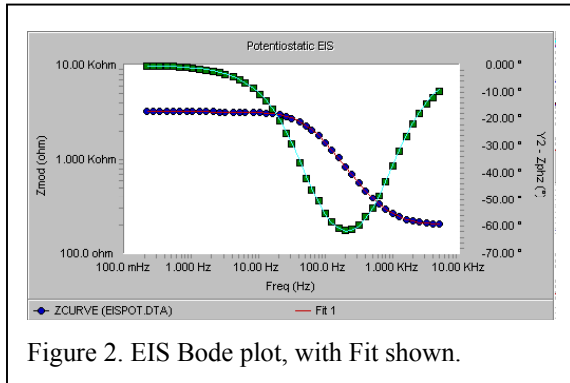
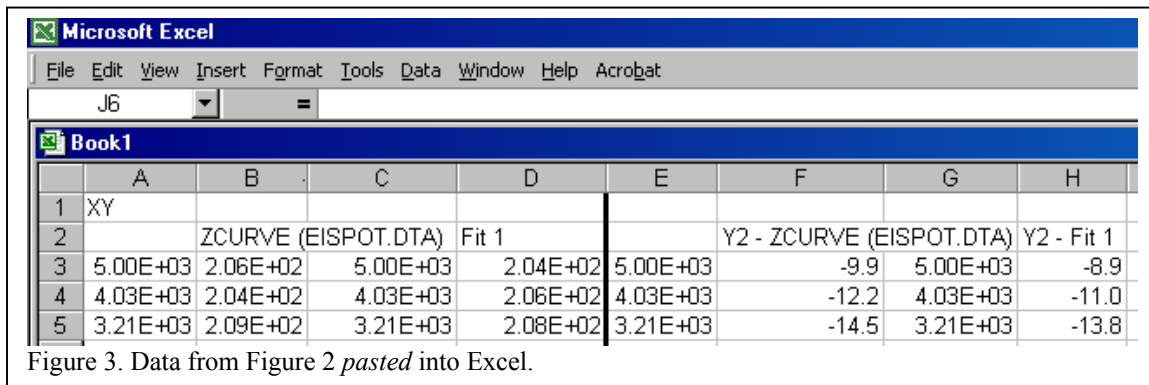


Figure 2. EIS Bode plot, with Fit shown.

The format for the text data, which may be *pasted* into Excel, will depend on what is displayed on the graph. For a Bode Plot of an EIS data file, with a model fit shown (see Figure 2) the text will copy as eight columns of data. These eight columns are shown after they have been *pasted* into Excel in Figure 3. The columns represent the XY data for each of the four elements shown on the graph: Zmag, Zmag(Fit), Phase, Phase(Fit). If you have more curves, lines, or fits on the graph, then each curve, line, or fit will add two columns to the data, one for x data and one for y data.

Even though the Bode plot uses a logarithmic axis for Z and for frequency, it is the frequency(x) and raw Z data (y) that is copied, not their logarithms.



	A	B	C	D	E	F	G	H
1	XY							
2		ZCURVE (EISPOT.DTA)	Fit 1			Y2 - ZCURVE (EISPOT.DTA)	Y2 - Fit 1	
3	5.00E+03	2.06E+02	5.00E+03	2.04E+02	5.00E+03	-9.9	5.00E+03	-8.9
4	4.03E+03	2.04E+02	4.03E+03	2.06E+02	4.03E+03	-12.2	4.03E+03	-11.0
5	3.21E+03	2.09E+02	3.21E+03	2.08E+02	3.21E+03	-14.5	3.21E+03	-13.8

Figure 3. Data from Figure 2 *pasted* into Excel.

The results of a Fit operation may also be copied and pasted into another application. To copy the fit results, first click on the tab for those results. A column may be selected by clicking on its heading. Multiple columns may be selected by holding down the shift key while selecting the columns. Once you have selected all the desired columns, clicking the right mouse key allows you to either print the values or to copy them to the clipboard. From the clipboard, they may be *pasted* into Excel or another Windows application.

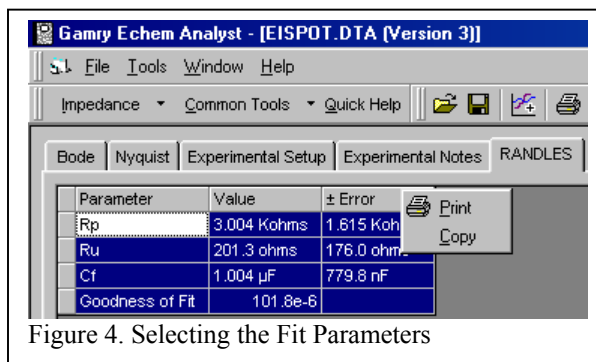


Figure 4. Selecting the Fit Parameters

The graphical description of the circuit model used to fit the data can be copied and used in another application by using the Windows "Alt +PrintScreen" button combination to copy the active window (be sure it is the Model Editor Window!) to the clipboard as a BMP file. It can then be pasted into Word or Excel as desired. You may wish to use MS Paint or another drawing program to enhance the BMP image.

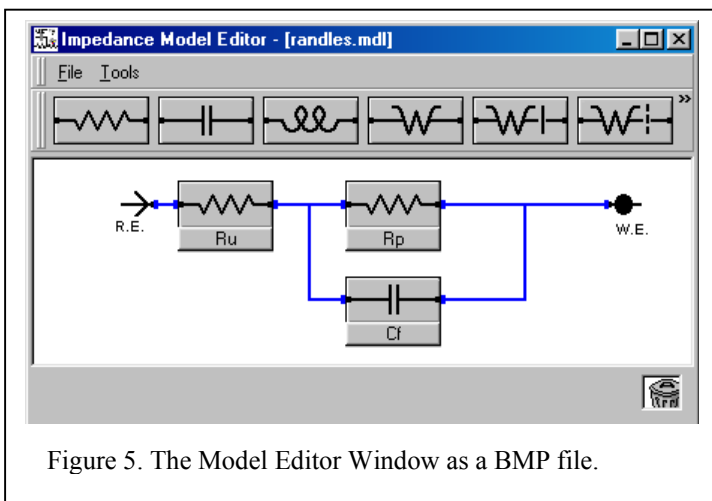


Figure 5. The Model Editor Window as a BMP file.