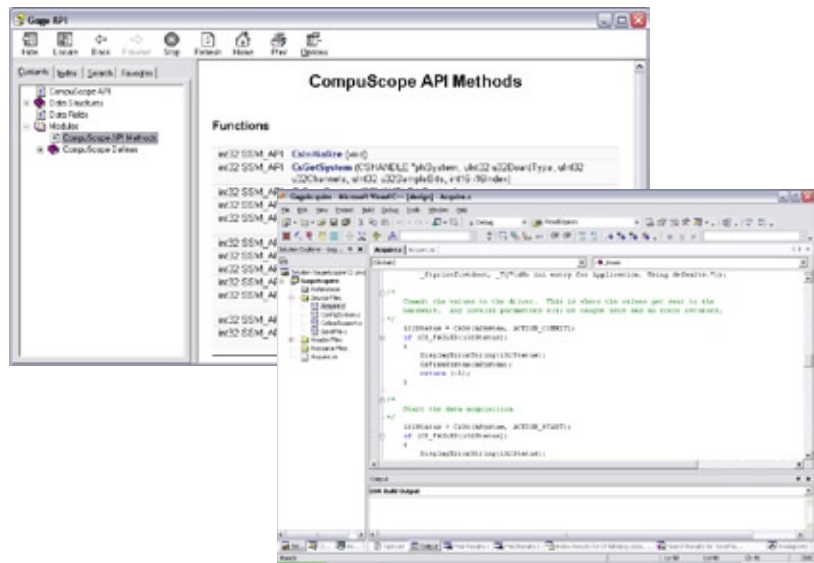


Gage's powerful and easy-to-use SDKs allow rapid integration of Gage hardware into a customer's software application under C/C#, MATLAB, LabVIEW, and other programming environments.

The CompuScope C/C# SDK for Windows allows Gage users complete control of CompuScope hardware while taking full advantage of the power and innovation of the C or C# programming languages.

## CompuScope C/C# SDK for Windows Supports PCI and cPCI/PXI CompuScope Cards



Gage's CompuScope C/C# SDK allows complete control of Gage CompuScope hardware from a C/C# application running under Windows. The SDK provides several C and C# sample programs illustrating the use of CompuScope hardware in different operating modes. These sample programming examples serve as a starting point for an optimized C or C# application using Gage CompuScope hardware.

### FEATURES

- Support for all CompuScope operating modes and combinations of CompuScope hardware
- Full control of configuration settings on all sample programs from Windows text INI files
- Compiled, ready-to-operate executable version of all sample programs
- Driver re-entrancy, which allows simultaneous operation of CompuScope hardware from different application programs
- Easy querying for feedback on all current CompuScope hardware settings
- Full support for advanced timing features such as on-board time-stamping, external clocking, and 10 MHz reference synchronization
- Transparent support for Master/Slave Multi-Card CompuScope systems
- Extra Advanced sample programs for support of on-board CompuScope processing FPGA firmware options
- Soft CHM-based, linked API manual



## COMPUSCOPE C/C# SDK SAMPLE PROGRAMS

GageSimple	Verifies CompuScope driver and C/C# SDK operation
GageAcquire	Provides control of the CompuScope system in simple acquisition mode
GageCoerce	Similar to GageAcquire, except that invalid settings are forced to available values
GageMultipleRecord	Provides control of the CompuScope system in Multiple Record mode
GageDeepAcquisition	Acquires and manages large data acquisitions from Deep Memory CompuScope Hardware (> 16 MB)
GageComplexTrigger	Provides support for complex triggering using multiple on-board CompuScope trigger engines
GageMultipleSystem	Operates multiple independent CompuScope systems with their own setting controls and output data files

The CompuScope C/C# SDK is designed to exploit Gage's new generation of CompuScope Windows drivers version 4.0+ in the C programming language under MicroSoft Visual C/C++ 6.0+ or other C compilers. C# support allows operation under MicroSoft .NET version 1.1+.

\*C/C# SDK is compatible with LabWindows/CVI 7.0+ compiler.  
Visual Basic.NET support available with purchase of C/C# SDK.

900 N. State St.  
Lockport, IL 60441-2200

**Toll-Free (US and Canada):**  
phone 1-800-567-4243  
fax 1-800-780-8411

**Direct:**  
phone +1-514-633-7447  
fax +1-514-633-0770

**Email:**  
prodinfo@gage-applied.com

To find your local sales representative or distributor or to learn more about Gage's products visit:

**[www.gage-applied.com](http://www.gage-applied.com)**

### ORDERING INFORMATION

#### Hardware & Upgrades

CompuScope SDK for C/C#                      200-200-101  
for Windows

Ask about our SDK Pack for C/C#, MATLAB, and LabVIEW, for CompuScope cards.

Copyright © 2005, 2006 Gage Applied Technologies. All rights reserved.  
Updated February 15, 2006