



CS14200 Hardware Manual

Reorder #: MKT-HWM-PCI01-CS14200
0408

First Edition (August 2004)

GAGE, COMPUSCOPE, and GAGESCOPE are registered trademarks of Gage Applied Technologies, Inc. MS-DOS, WINDOWS 95, WINDOWS 98, WINDOWS ME, WINDOWS NT, WINDOWS 2000 and WINDOWS XP are trademarks of Microsoft Incorporated. LabVIEW is a registered trademark of National Instruments. MATLAB is a registered trademark of The MathWorks Inc. IBM, IBM PC, IBM PC/XT, IBM PC AT and PC-DOS are trademarks of International Business Machines Corporation. All other trademarks are registered trademarks of their respective companies.

Changes are periodically made to the information herein; these changes will be incorporated into new editions of the publication. Gage Applied Technologies, Inc. may make improvements and/or changes in the products and/or programs described in this publication at any time. The latest copy of this manual can be found on our web page at www.gage-applied.com in the Downloads section, User Manuals.

Copyright © 2004 Gage Applied Technologies, Inc. All Rights Reserved, including those to reproduce this publication or parts thereof in any form without permission in writing from Gage Applied Technologies, Inc. The installation program used to install the GageScope Software, InstallShield, is licensed software provided by InstallShield Software Corp., 900 National Parkway, Ste. 125, Schaumburg, IL. InstallShield is Copyright ©1998 by InstallShield Software Corp., which reserves all copyright protection worldwide. InstallShield is provided to you for the exclusive purpose of installing the GageScope Software. In no event will InstallShield Software Corp. be able to provide any technical support for GageScope. For detailed Terms and Conditions, please refer to the *GageScope User's Guide*.

Please complete the following section and keep it handy when calling Gage for **technical support**:

Owned by: _____
Serial Number(s): _____

Purchase Date: _____
Purchased From: _____

You must also have the following information when you call:

- Software Driver & Application Version
- Software Development Kit, if applicable
- Brand name and type of computer
- Processor and bus speed
- Total memory size
- Information on all other hardware in the computer

How to reach Gage Applied Technologies for Product Support

Toll-free phone: (800) 567-GAGE Toll-free fax: (800) 780-8411

To reach Gage from outside North America

Tel: (514) 633-7447 Fax: (514) 633-0770

Email: prodinfo@gage-applied.com **Website:** www.gage-applied.com

Table of Contents

- What you should receive with your CompuScope 142004**
- Introduction to the CompuScope 142006
- CompuScope 14200 specifications7
- CompuScope 14200 ordering information11
- CompuScope 14200 simplified block diagram.....12
- CompuScope 14200 connectors and headers13
- Special characteristics and features of the CompuScope 14200.....14
 - Frequency response14
 - Trigger Output signal14
 - Clock Output signal.....15
 - Clock Input signal15
 - Windowed triggering.....15
- CompuScope 14200 throughput & maximum PRF16

What you should receive with your CompuScope 14200

If you order an independent CompuScope 14200 card, you should receive the following articles:

- CompuScope 14200 card



- You will also receive a number of standard items included with each order:

Hardware Manual and Installation Guide



Note that you will receive only one copy of the Hardware Manual per order placed with Gage. Additional copies can be requested at order time.

The Hardware Manual is also available in PDF format on the Gage Software Disk or you can download card-specific manuals from Gage's Web site.

Gage Software Disk (with GageScope Software)



The Gage Software Disk, included at the back of the Hardware Manual and Installation Guide, contains all of the software drivers you need to operate your Gage hardware. The CD also contains all of the installers for the application packages provided by Gage, including Lite, Standard and Professional editions of GageScope.

Note that some packages will only be available if you have purchased the software and have a key provided by Gage.

CompuScope Certificate of NIST Traceable Calibration



Each CompuScope card is shipped with a Certificate of NIST traceable Calibration. NIST is the National Institute to Standards and Technologies - the US organization that is responsible for the definitions and measurement of metrology standards.

Prior to shipment, Gage runs each CompuScope card through a battery of over 1000 automated performance verification tests using a NIST Traceable calibration source. The tested CompuScope is then considered a NIST traceable calibration instrument for a period of one year – the calibration interval that is generally accepted by the Test and Measurement industry.

Warranty card



- You may also receive a number of optional items, if purchased:

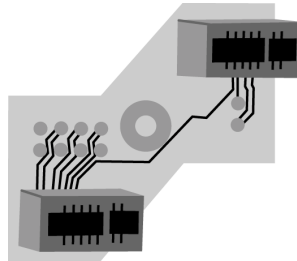
GageScope[®] software and
Standard or Professional edition
Software Key envelope

Software Development Kits (SDKs)
& applicable manual(s)



- If you ordered Master or Slave upgrades with your CompuScope 14200 cards, you will receive one of the following Master/Slave Timing Modules (actual Master/Slave Timing Module may not be exactly as shown).

2 Card
Master/Slave
Timing Module



Carefully inspect these articles before proceeding further. If you find any damage caused by transportation, please report it to the organization from which you purchased the CompuScope card.

Introduction to the CompuScope 14200

The CompuScope 14200 is a 14 bit, 200 MS/s dual channel general-purpose waveform digitizer card for the PCI Bus.

The CompuScope 14200 represents a new generation of digitizers from Gage and has most of the advanced features you would expect from a top performance signal capture card:

- 2 synchronous channels at maximum sampling speed of 200 MS/s.
- Up to a total of 1 billion samples of on-board acquisition memory in a single full-length PCI slot format.
- Data transfer rates from CompuScope memory to PC memory as high as 200 MB/s through Bus Mastering on a 66 MHz, 32 bit PCI bus.
- 100 MHz bandwidth specification.
- Ease of integration with External Clock In and Out, External Trigger In and Out.
- Ease of system development with Software Development Kits (SDKs) for C/C++, MATLAB and LabVIEW.
- Pre-Trigger Multiple Record functionality, which help optimize the use of the on-board memory by stacking data from successive acquisitions.
- A nominal resolution of 14 bits, combined to an accuracy of $\pm 0.5\%$ for precise absolute measurements of fine signal details.
- On-board self-calibration to guarantee consistent accuracy across input ranges and modes of operation; self-calibration can be automatic or user-controlled to minimize down time and ensure availability of the card for measurement in test systems.
- Full-featured front-end, with software control over input ranges, coupling and impedances.
- Excellent frequency response and minimal phase distortion characteristics; designed for optimal cross-channel synchronization and smooth frequency response within a ± 1 dB band of the 'ideal' response for the bandwidth.
- Time-stamping acquired records using an on-board 44 bit counter that is clocked by a 66 MHz crystal oscillator. This is particularly useful in Multiple Record mode. Optionally, the time-stamp counter can use the sample clock as its reference.
- On-board Phase Lock Loop (PLL) circuitry allows an external 10 MHz clock reference to synchronize the on-board oscillator to provide the sampling clock signal.

CompuScope 14200 specifications

PLEASE CHECK THE GAGE WEBSITE FOR THE MOST UP-TO-DATE SPECIFICATIONS.

SYSTEM REQUIREMENT

PCI-based computer with at least one free full-length PCI slot, 128 MB RAM, 100 MB hard disk. Minimum Pentium II 500 MHz and SVGA video.

SIZE

Plugs into one full-length PCI slot, 13" x 4.1", for all memory configurations.

POWER

+ 5 Volts		
	Worst Case	Typical
All memory depths	18.25 W	18.25 W
+3.3 Volts		
	Worst Case	Typical
All memory depths	6.67 W	6.67 W
+ 12 Volts		
	Worst Case	Typical
All memory depths	0 W	0 W
- 12 Volts		
	Worst Case	Typical
All memory depths	0 W	0 W

COOLING SYSTEM

Min. CFM requirement: *Characterization in progress*

A/D SAMPLING

Inputs per card: 2

Resolution: 14 bits

Sampling Rates, Channels A and B simultaneously, or A only:
200 MS/s, 160 MS/s, 100 MS/s, 80 MS/s, 50 MS/s, 40 MS/s,
25 MS/s, 20 MS/s, 10 MS/s, 5 MS/s, 2 MS/s, 1 MS/s, 500 kS/s,
200 kS/s, 100 kS/s, 50 kS/s

Connector: BNC

Impedance: 1 M Ω , 40 pF or 50 Ω ; software-selectable

Coupling: AC or DC; software-selectable

AC Coupled Bandwidth: 10 Hz to 100 MHz (see Note 2)

DC Coupled Bandwidth: DC to 100 MHz (50 Ω only, slightly less for 1 M Ω ; see Note 2)

Flatness (see Note 2): Within ± 1 dB of ideal response over 75% of bandwidth

DC Accuracy: $\pm 0.5\%$

Input Voltage Ranges: ± 100 mV, ± 200 mV, ± 500 mV, ± 1 V, ± 2 V, ± 5 V
(± 5 V is only available in 50 Ω)

DC Offset: ± 1 time Full Range, except in ± 5 V input range

Protection: 1 M Ω impedance: Diode-clamped
50 Ω impedance: No protection

Absolute Maximum Amplitude:

1 M Ω impedance: ± 15 V (continuous)

50 Ω impedance: ± 5 V (continuous), ± 15 V (for 1 ms duration)

DIRECT-TO-ADC SAMPLING MODE

Mode control:	Software-selectable
AC Coupled Bandwidth:	30 kHz to 75 MHz (50 Ω , AC only; see Note 2)
Range:	± 500 mV
Protection:	No protection
Absolute Maximum Amplitude:	± 2 V (continuous) ± 4 V (for 1 ms duration)
Sample Rate :	≤ 100 MS/s

DYNAMIC PARAMETERS

Unless otherwise noted, the dynamic parameters are measured with input amplitude of 95% of Full Scale in Direct-to-ADC mode. Sampling is done at 80 MS/s on both channels. Typical values for either channel are listed below.

ENOB:	10.7
SNR:	66 dB
SFDR:	71 dB
SINAD:	64 dB

ACQUISITION MEMORY

Data Storage:	In on-board memory
Memory depth per channel:	16 Msamples, 64 Msamples, 512 Msamples; (14 bit samples in 16 bit words)
One Channel Mode (Channel A only):	Up to full on-board memory

TRIGGERING

Trigger engines:	2 per system
Source:	Ch. A, Ch. B, EXT or Software; software-selectable
Input combination:	1, 2, 1 or 2
Type:	Analog triggering
Level Accuracy:	$\pm 5\%$ of Full Scale
Slope:	Positive or Negative, software-selectable
Sensitivity:	$\pm 10\%$ of Full Scale This implies that the signal amplitude must be at least 20% of full scale to cause a trigger to occur. Smaller signals are rejected as noise.
Post Trigger Data:	128 points minimum. Can be defined with a 64 point resolution.
Max. Record Length:	Up to maximum memory

INTERNAL CLOCK

Source:	Clock oscillator
Accuracy:	± 25 ppm (0 to 70° C)

EXTERNAL TRIGGER

Impedance:	1 M Ω , 35 pF
Amplitude:	Absolute Maximum \pm 15 V
Voltage Ranges:	\pm 1 V and \pm 5 V (software-selectable)
Bandwidth:	80 MHz
Coupling:	AC or DC
Connector:	SMA

TRIGGER OUT

Impedance:	50 Ω
Amplitude:	0-2.5 V (TTL)
Connector:	SMA

EXTERNAL CLOCK

Maximum Frequency:	200 MHz
Minimum Frequency:	1 MHz
Signal Level:	Minimum 1 V RMS Maximum 2 V RMS
Impedance:	50 Ω
Sampling Edge:	Rising
Duty Cycle:	50% \pm 5%
Connector:	SMA

EXTERNAL REFERENCE

The External Reference timebase is used to synchronize the Internal Sampling Clock

Frequency:	10 MHz; Software-selectable
Signal Level:	Minimum 1 V RMS Maximum 2 V RMS
Impedance:	50 Ω
Sampling Edge:	Rising
Duty Cycle:	50% \pm 5%
Connector:	SMA

CLOCK OUT

Maximum Frequency:	100 MHz
Minimum Frequency:	1 MHz (from External Clock) 40 MHz (from Internal Clock)
Signal Level:	0-2.5 V (TTL)
Impedance:	50 Ω
Duty Cycle:	50% \pm 10%
Connector:	SMA

MULTIPLE RECORD

Pre-trigger Data:	Up to virtually full record length
Record Length:	128 points minimum; can be defined with a 64 points resolution
Maximum Number of Triggers:	8,388,608

TIMESTAMPING

Resolution: 7.5 ns
Counter turnover: 24 hours continuous

MULTI-CARD SYSTEMS

Operating Mode: Master/Slave or Multiple/Independent configurations
Maximum Number of Cards
Master/Slave: 2 to 8 cards
Multiple/Independent: Limited by PC backplane

PCI BUS INTERFACE

Plug-&-Play: Fully supported
Bus Mastering: Fully supported
Scatter-Gather: Fully supported
Bus Width: 32 bits
Bus Speed: 66 MHz or 33 MHz
Bus Throughput: 200 MB/s to PC Memory (66 MHz PCI; dependent on motherboard and number of PCI-PCI bridges)
Compatibility: PCI-compliant v.2.2 systems
Also v.2.1 systems that supply 3.3 V to PCI slot

OPERATING SYSTEMS SUPPORTED

- Windows 2000*/XP CompuScope Driver version 3.80.xx
* SP1 or higher

APPLICATION SOFTWARE

GageScope[®]: Windows-based software for programming-free operation

LITE Edition: Included with purchase, provides basic functionality
Standard Edition: Provides limited functionality of advanced analysis tools, except for Extended Math
Professional Edition: Provides full functionality of all advanced analysis tools

SOFTWARE DEVELOPMENT KITS (SDK)

- CompuScope SDK for C/C++
Includes Sample Programs in Visual C++
- CompuScope SDK for MATLAB
- CompuScope SDK for LabVIEW

WARRANTY

One year parts and labor.

Notes:

- 1) Unless otherwise specified, all dynamic performance parameters are measured at input amplitude of 95% of Full Scale in Direct-to-ADC mode and sampling at 80 MS/s.
- 2) Detailed characterization curves pending and will be available upon request.

ALL SPECIFICATIONS SUBJECT TO CHANGE WITHOUT NOTICE

CompuScope 14200 ordering information

Hardware and upgrades

Product	Order No.
CompuScope 14200 – 32M	142-001-002
CompuScope 14200 –128M	142-001-004
CompuScope 14200 – 1G	142-001-006
CS14200: Memory Upgrade Charge	142-181-200
CS14200: Master Multi-Card Upgrade	142-181-002
CS14200: Slave Multi-Card Upgrade	142-181-003

GageScope Software

Product	Order No.
GageScope Lite Edition	Included
GageScope Standard Edition – purchased with CompuScope hardware	300-100-351
GageScope Standard Edition – purchased independently	300-100-352
GageScope Professional Edition – purchased with CompuScope hardware	300-100-354
GageScope Professional Edition – purchased independently	300-100-355

Software Development Kits (SDKs)

Product	Order No.
Gage SDK Pack (No Hardcopy of Manuals included)	200-113-000
Gage SDK Pack (Hardcopy of Manuals included)	200-113-002
CompuScope SDK for C/C++	200-200-101
CompuScope SDK for MATLAB	200-200-102
CompuScope SDK for LabVIEW	200-200-103

CompuScope 14200 simplified block diagram

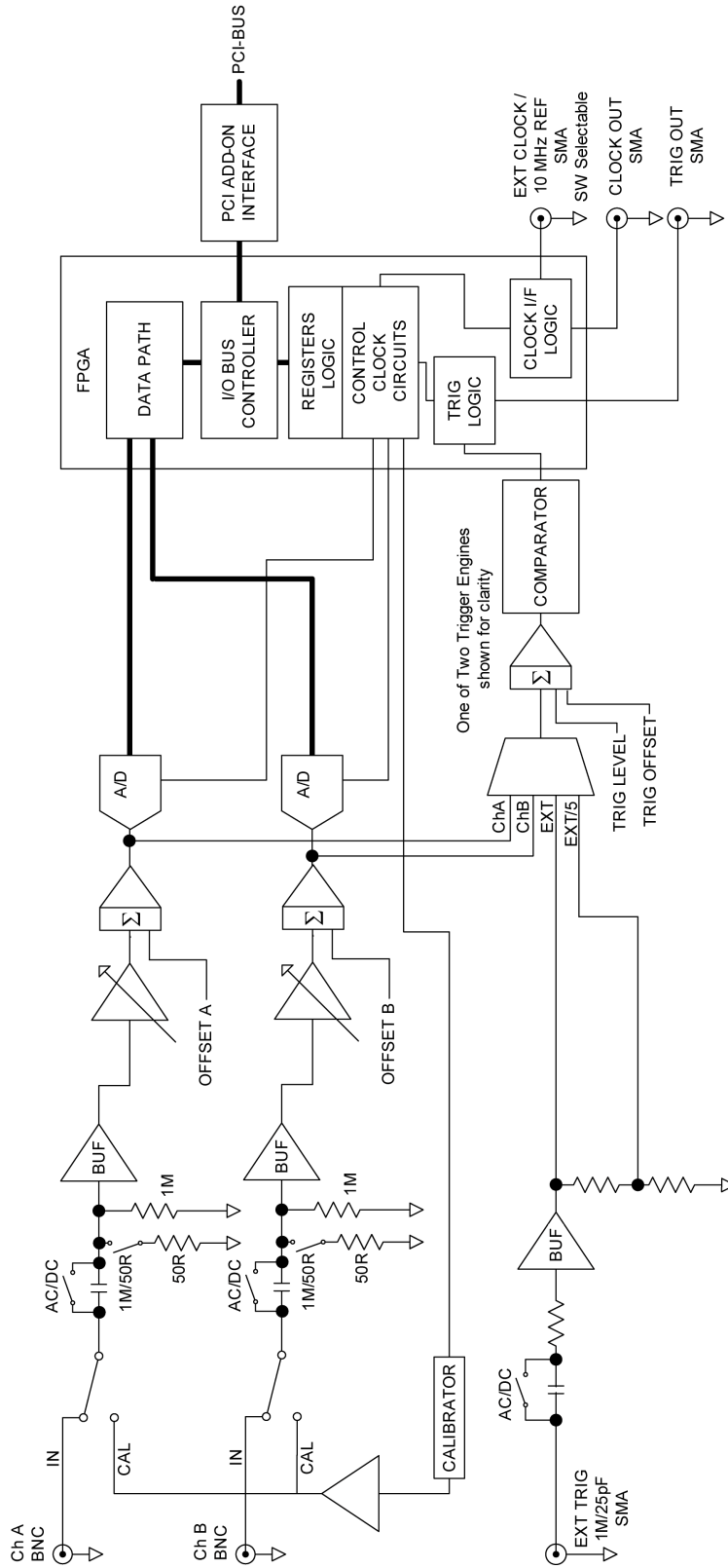


Figure 1: CS14200 simplified block diagram

CompuScope 14200 connectors and headers

CompuScope cards connect to the outside world through connectors, both analog (SMAs or BNCs) and digital (PCI bus). This section describes these connectors for the CS14200 card.

The connectors and headers on the CS14200 card are shown below:

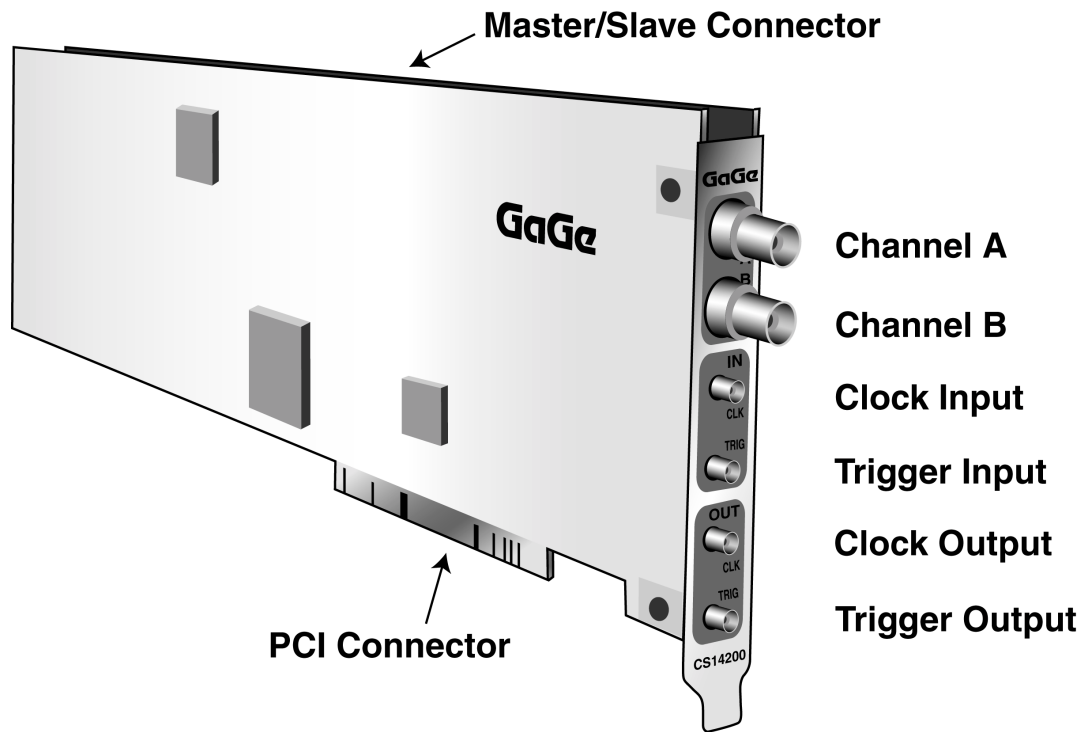


Figure 2: Connectors on CS14200

- **Channel A BNC** connector is used to input an analog signal that is sampled as Channel A.
- **Channel B BNC** connector is used to input an analog signal that is sampled as Channel B.
- **Clock Input SMA** connector is used to input a signal to be used as the sampling clock. This signal is referred to as the External Clock signal.
- **Trigger Input SMA** connector is used to input a signal that is used as an External Trigger. External Trigger is defined exactly as in an oscilloscope. This signal can be used to trigger the system but cannot be viewed or digitized.
- **Clock Output SMA** connector is used to supply the clock signal, either from the internal oscillator or from the External Clock Input, to another module of the test system or experimental setup. The characteristics of the Output are detailed in the Specifications section.
- **Trigger Output SMA** connector is used to supply a trigger signal generated by the card to another module of the test system or experimental setup.
- **Master/Slave connector.** The Master/Slave connector is located near the top edge of the CS14200 card.

The Master/Slave Timing Module is used to pass all the signals necessary to synchronize Slave CS14200 cards with the Master.

Special characteristics and features of the CompuScope 14200

The CompuScope 14200 (CS14200) provides a wide array of advanced digitizer capabilities. This section is a brief review of some of the special characteristics and features offered by the card.

Frequency response

Designed to satisfy a wide range of applications, it is critical that the CS14200 provides frequency measurements as precise and reliable as possible over the analog bandwidth of the card.

The CS14200 has a very flat frequency response, minimizing the attenuation or amplification of frequency components, so that the signals from the BNC connectors to the ADCs are as identical as possible. The paths of clocking signals to the ADCs are also as similar to one another as possible. As such, the frequency responses of both channels falls within a narrow band around the ideal frequency response for the bandwidth.

The figure below illustrates the actual frequency response of the CS14200 using the following setup parameters: DC FS=50 MHz, 500 Ω , $\pm 1V$ range.

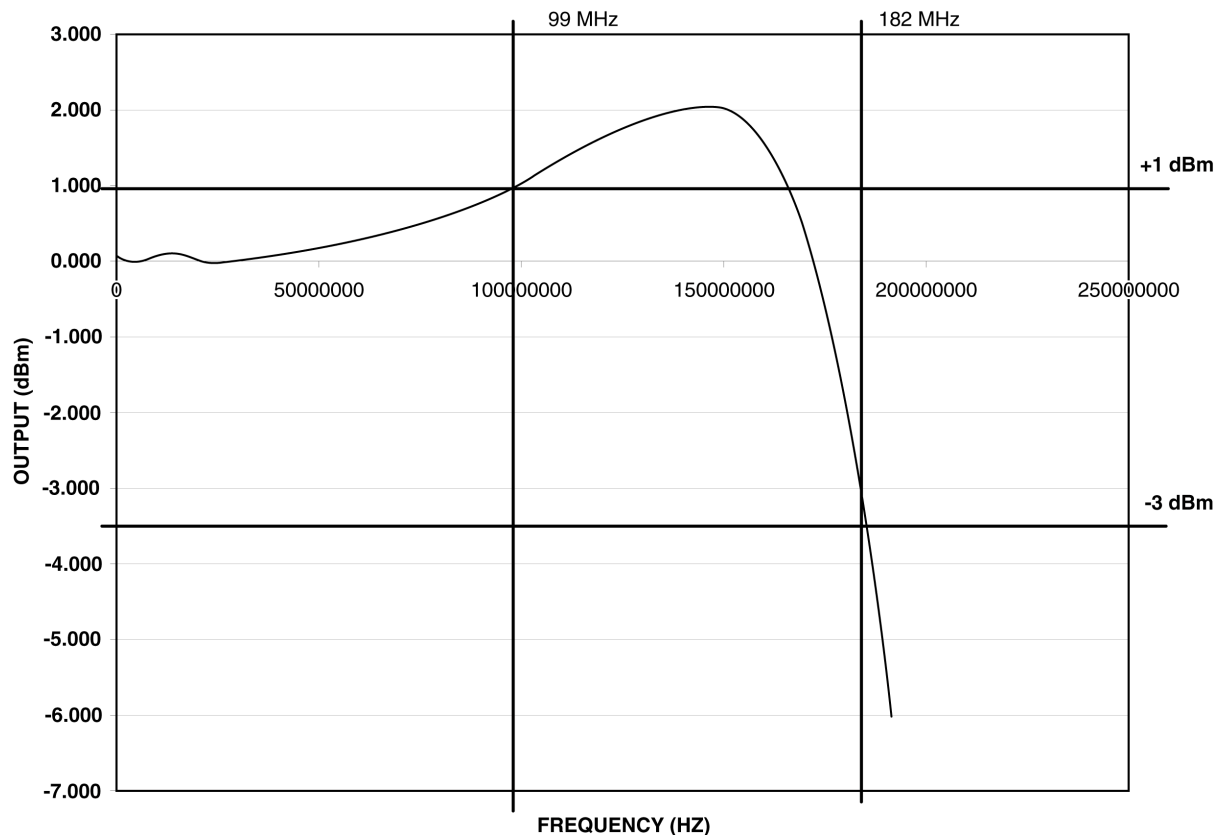


Figure 3: Illustration of the frequency response

Trigger Output signal

The Trigger Output signal provides a mechanism to synchronize other system elements to the trigger event that caused the CS14200 to start acquiring data.

Please note that the trigger signal provided by the CompuScope 14200 is only designed to drive one other device with 50 Ω impedance.

Clock Output signal

The Clock Output signal provides a clock synchronous to the sample clock being used to acquire data on the CS14200. The function is independent of the clock source, that is it functions the same way when the internal oscillator, the external clock, or the external reference clock is active.

Please note that the clock signal provided by the CompuScope 14200 is only designed to drive one other device with 50 Ω impedance.

Clock Input signal

The CompuScope 14200 can be clocked in any of three modes of operation, which are accessible via software commands.

The normal mode of operation consists in using the internally generated clock. This is the mode of operation by default; in this mode, the card ignores any signal present at the Clock Input connector. When developing an application for the CS14200 (in C/C++, LabVIEW, or MATLAB) you must supply the sampling rate to be used.

The second mode of operation consists in using the externally provided clock. In this mode, the card is instructed to expect a signal at the Clock Input connector, and to use it as the sampling clock. It is not critical to provide the sampling rate for this mode, but it is good practice.

Finally, you can select to use a reference clock, which is an industry standard 10 MHz clock, used to synchronize the card to the rest of the test system or experimental setup. In this mode the card is instructed to expect a signal at the Clock Input connector and to use the signal to control a proprietary phase frequency detector that synchronizes the on-board oscillators to the external reference signal.

The input characteristics detailed in the Specifications section are valid for both the External Clock and for the Reference Clock situations.

Windowed triggering

Using the CompuScope 14200 card's ability to have two independent trigger sources which are ORed together, the user can set up the triggering such that a trigger will occur if the input signal is outside a specified "window," i.e. it is higher than the upper limit or lower than the lower limit.

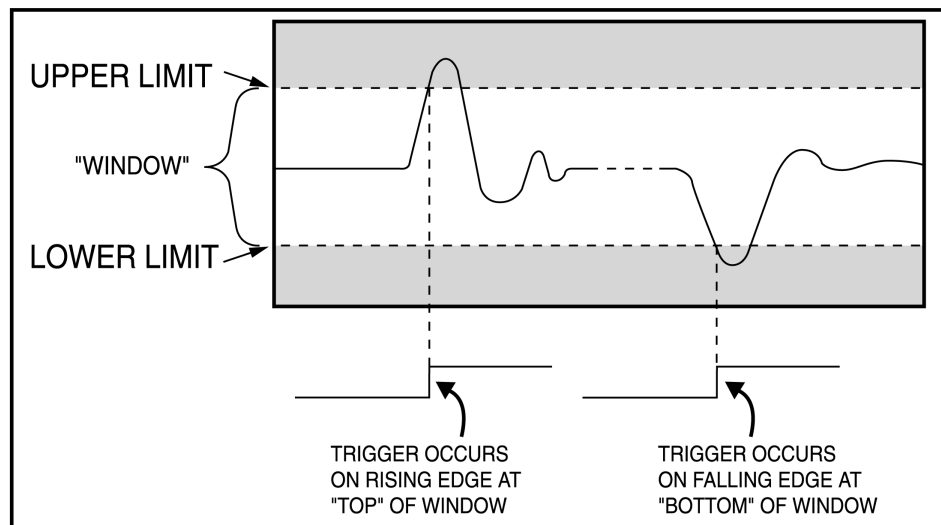


Figure 4: Windowed triggering

CompuScope 14200 throughput & maximum PRF

A number of applications require the CompuScope 14200 to acquire data based on a rapidly occurring trigger signal. These high Pulse Repeat Frequency (PRF) applications include radio, radar and ultrasound signal capture.

Gage has performed extensive repetitive capture benchmarks in single record mode. In this mode, the signal is captured into on-board CompuScope memory and the captured data are transferred through the PCI bus using PCI bus mastering to PC RAM.

Please note that much higher PRFs will be achieved using CompuScope Multiple Record mode.

The following test results were obtained using a computer configured as follows:

- Dual Pentium II, 400 MHz processor,
- LX400 Intel motherboard
- 512 MB RAM
- 20 GB disk drive
- Windows 2000
- NT File System
- 66 MHz, 32 bit PCI bus
- All slots support bus mastering

The application software used for throughput measurements was CStest.

The CS14200 was operated using CStest in both single and dual channel mode for many different capture depths and the results are plotted as points in the graph below. The PCI transfer rates were calculated from the linear portion of the curves at high depths.

PCI data transfer rate: 200 MB/s

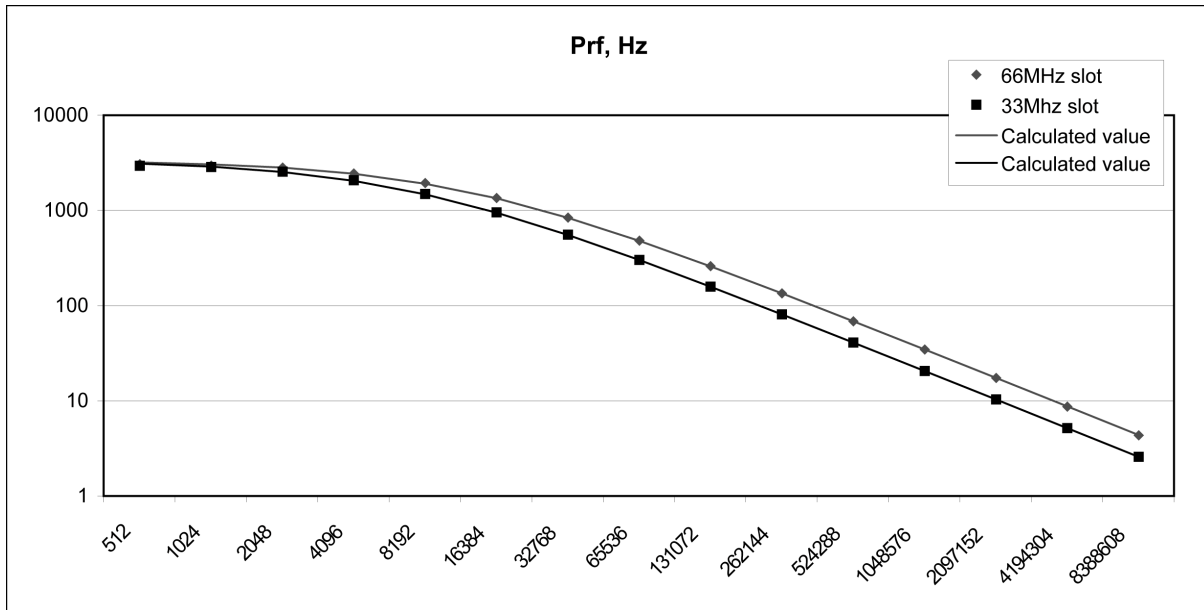


Figure 5: Maximum PRF vs. acquisition length