



Product Information

Erem Ergonomic Tip Cutter 2282E

Repetitive hand movements when performed over a lengthy period of time can cause damage to the median nerve, this was commonly called carpal tunnel syndrome (CTS) but is now referred to as work related upper limb disorder (WRULDS).



The solution:

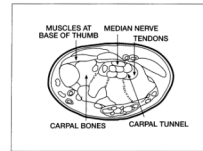
Erem have recognised that this injury can be caused by the continuous use of hand tools and to alleviate the problem have designed a range of hand tools with ergonomic handles.

The benefits these tools give are:

- The shape of the handle automatically ensures that the thumb and fingers are placed in the correct position.
- Operator fatigue is reduced by spreading the forces applied to the handle over the whole palm area.

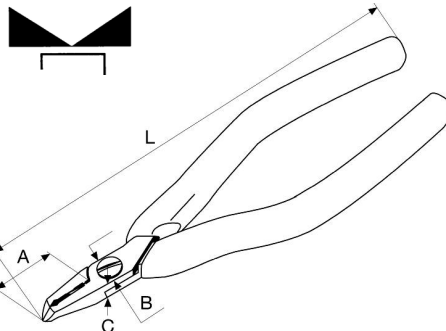
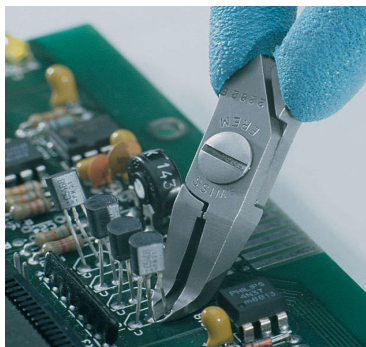
The ergonomic range has all of the other advantages of the well known Erem 'Magic' hand tools:

- Easily replaced ESD safe soft foam grips
- Internal opening spring
- Opening stops to prevent excessive hand spread
- Free of charge resharpener



Description

The 2282E is a full flush oblique tip cutter, specifically designed for use on printed circuit boards with high component density. The blades are angled at 45 deg. To allow cutting of component leads flush to the board or at 90 deg. to it and have an overbite protection system to prevent blade overlap.



Cutting capacity:

0.1 to 1.0mm on ductile wires.

Dimensions:

A Blade length: 20 mm / .787
B Head width: 10,5 mm / .413
C Thickness: 6 mm / .236
L Total length: 145 mm / 5 _

For more information please contact:

Cooper Tools GmbH
Carl-Benz-Str. 2
74354 Besigheim, Germany
Tel.: +49-7143-5800
Fax: +49-7143-580108

Erem S.A.
Rue de la Roselière 8
1400 Yverdon les Bains, Switzerland
Tel.: +41-24-4261206
Fax: +41-24-4250977