



plug & play instruments  
oscilloscopes

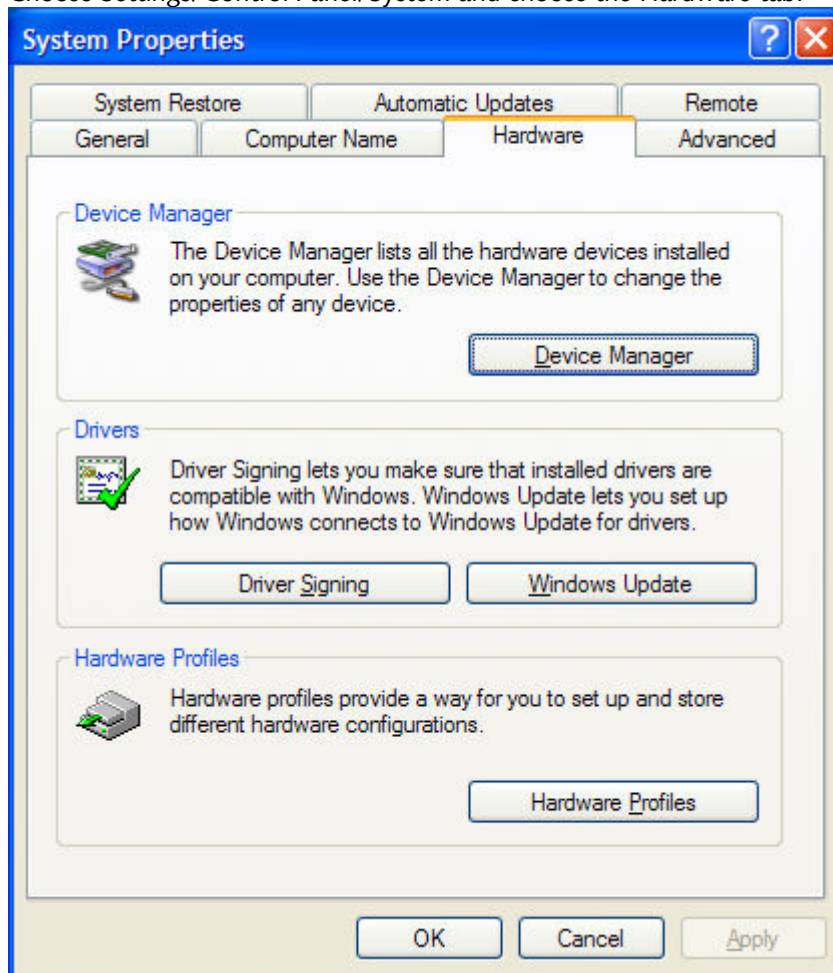
Phone +64 9 524 7456  
Fax +64 9 524 7457  
Email support@cleverscope.com  
28 Ranfurly Rd, Epsom  
P.O. Box 26-527  
Auckland 1023  
New Zealand

18 Oct 2007

## Installing or updating the driver (XP)

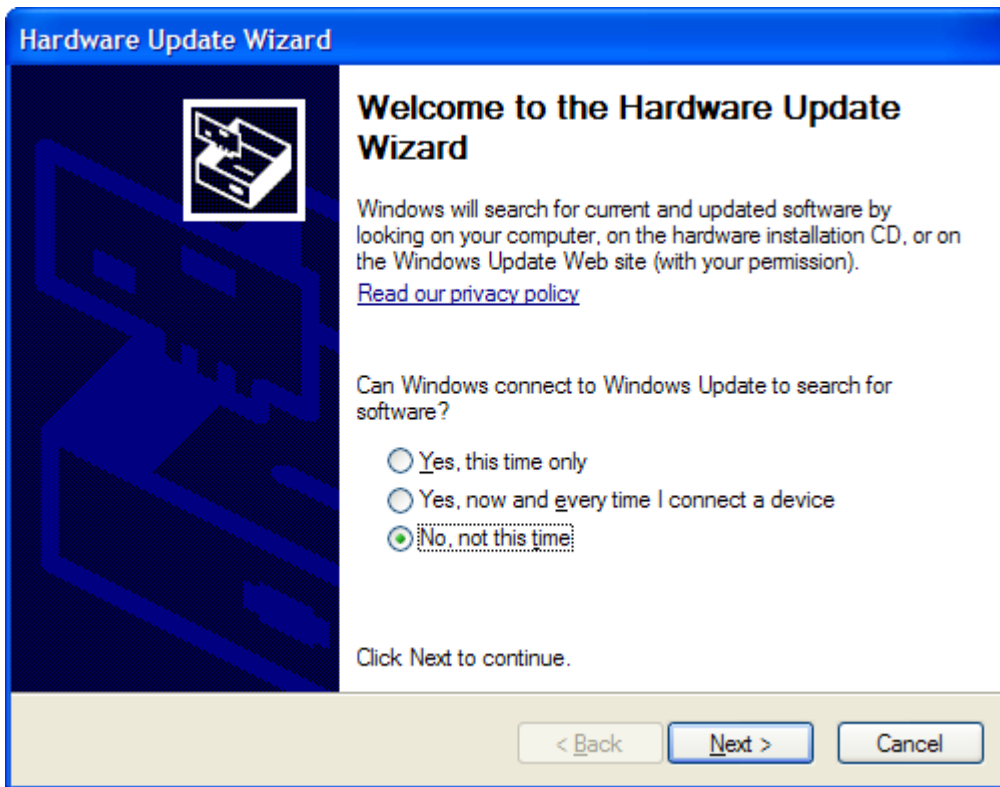
Follow these steps to install the latest Cleverscope USB driver.

1. Unzip the update into your Program Files/Cleverscope Directory. This will place a directory labelled 'Cleverscope USB driver' into the Cleverscope directory.
2. Choose Settings/Control Panel/System and choose the Hardware tab.

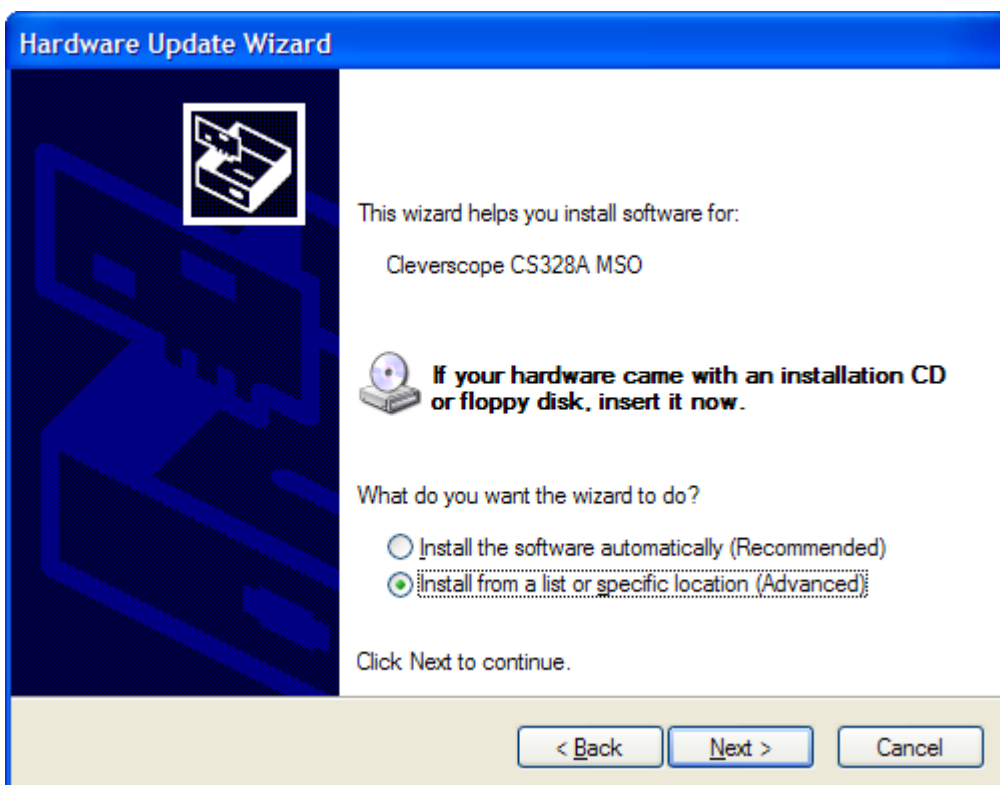


Click on 'Device Manager'

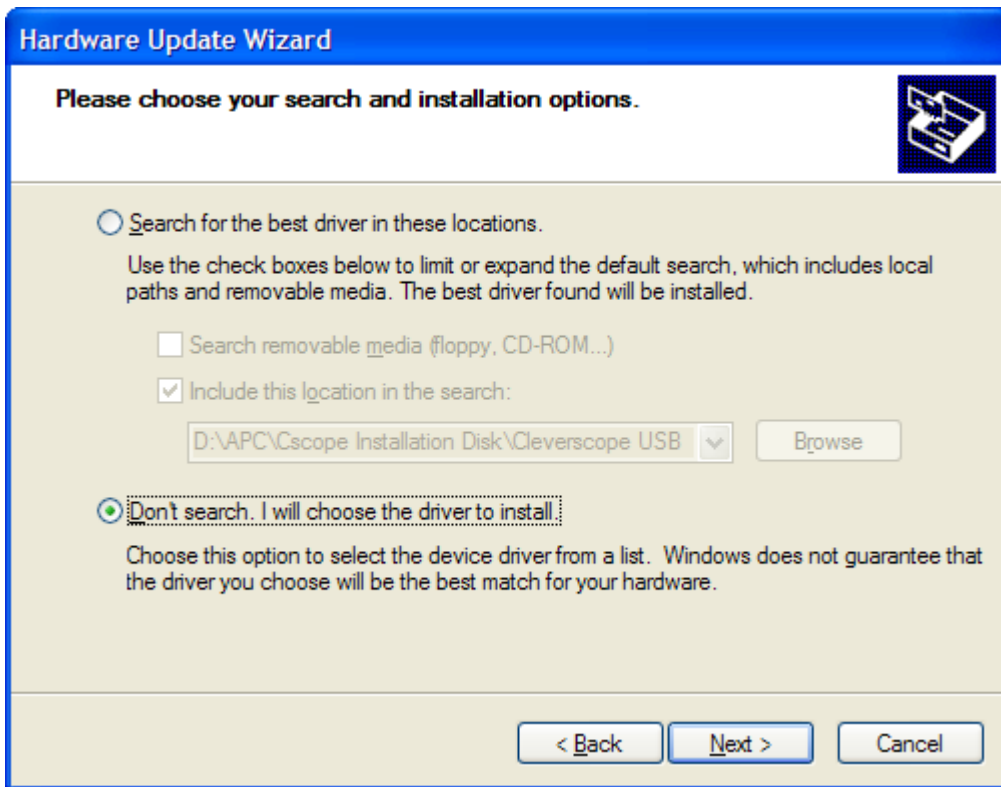
- Open the Universal Serial Bus controllers entry, and right click on 'Cleverscope CS328A MSO'. Choose 'No, not at this time', and click next'.



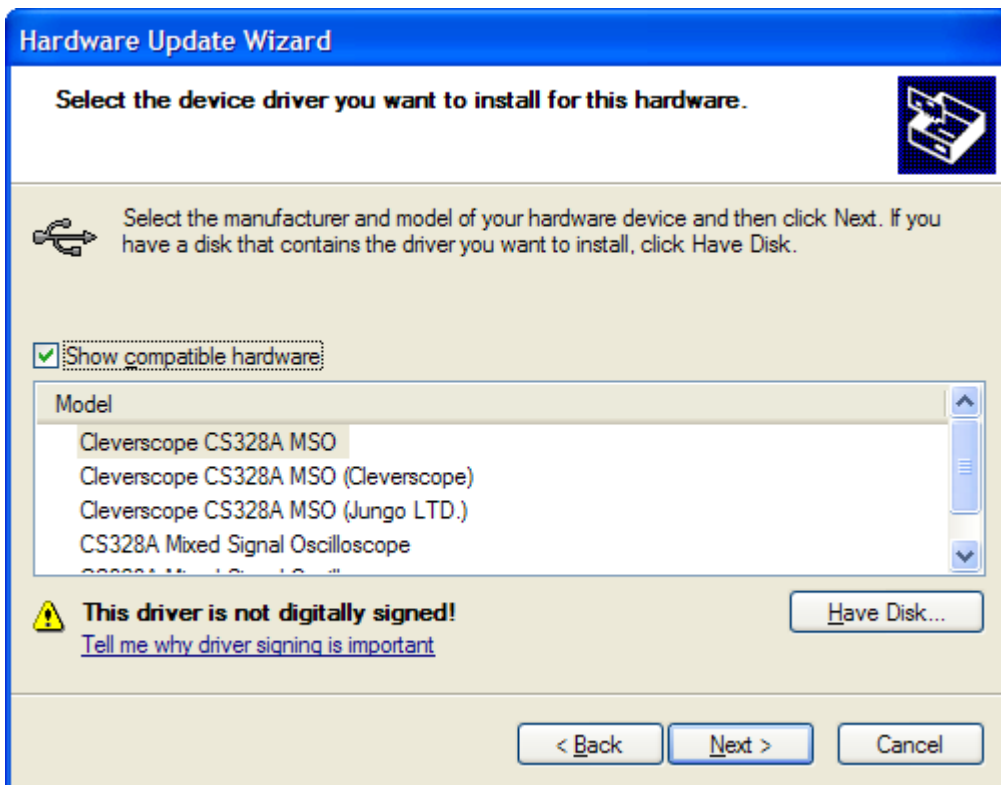
- Click on 'Install from a specific location (Advanced)' and click Next



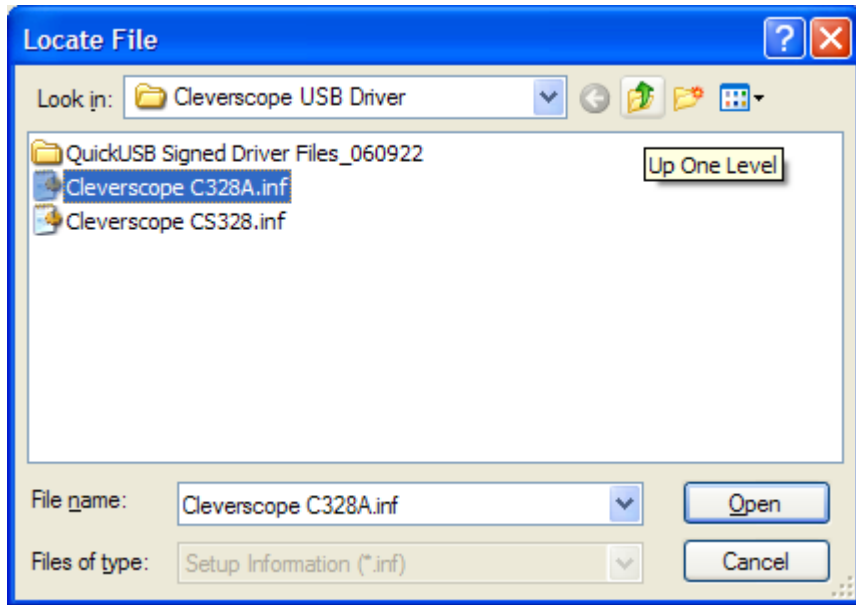
5. Click on 'Don't search. I will choose the driver to install', and click Next.



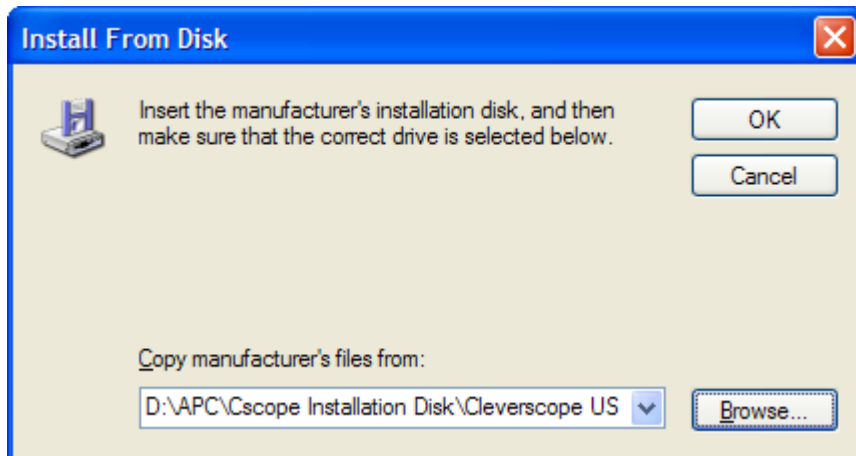
6. Choose any Cleverscope model. Click on 'Have Disk', and click Next.



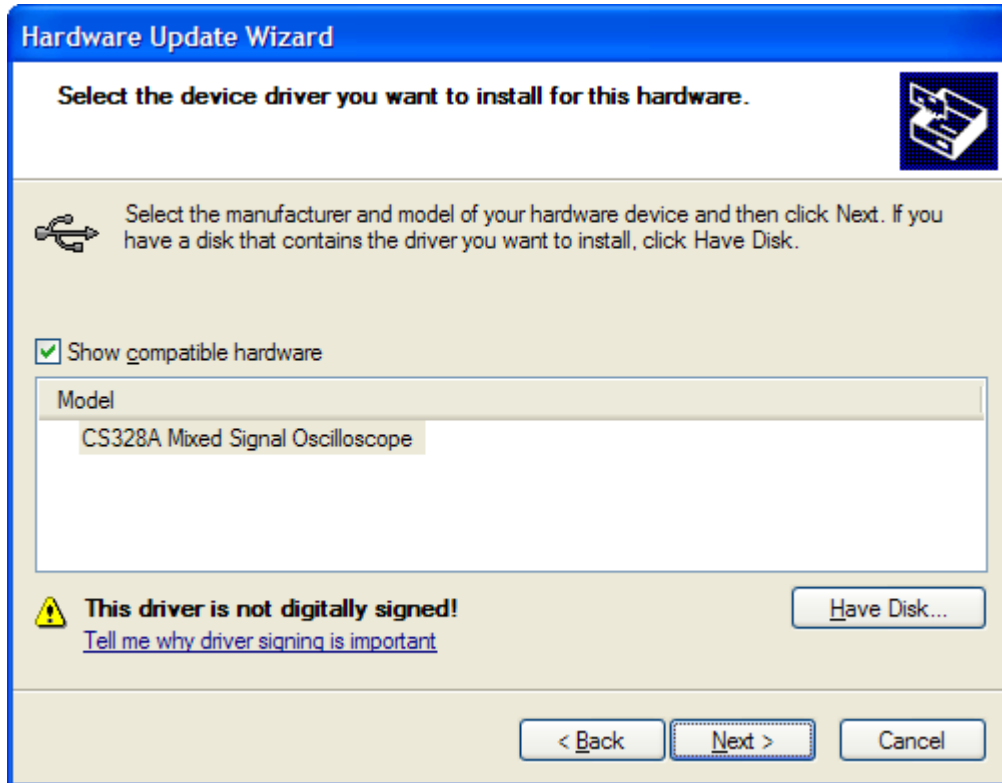
7. Navigate to the Program Files/Cleverscope/Cleverscope USB directory, and choose 'Cleverscope CS328A.inf'. Click 'Open'.



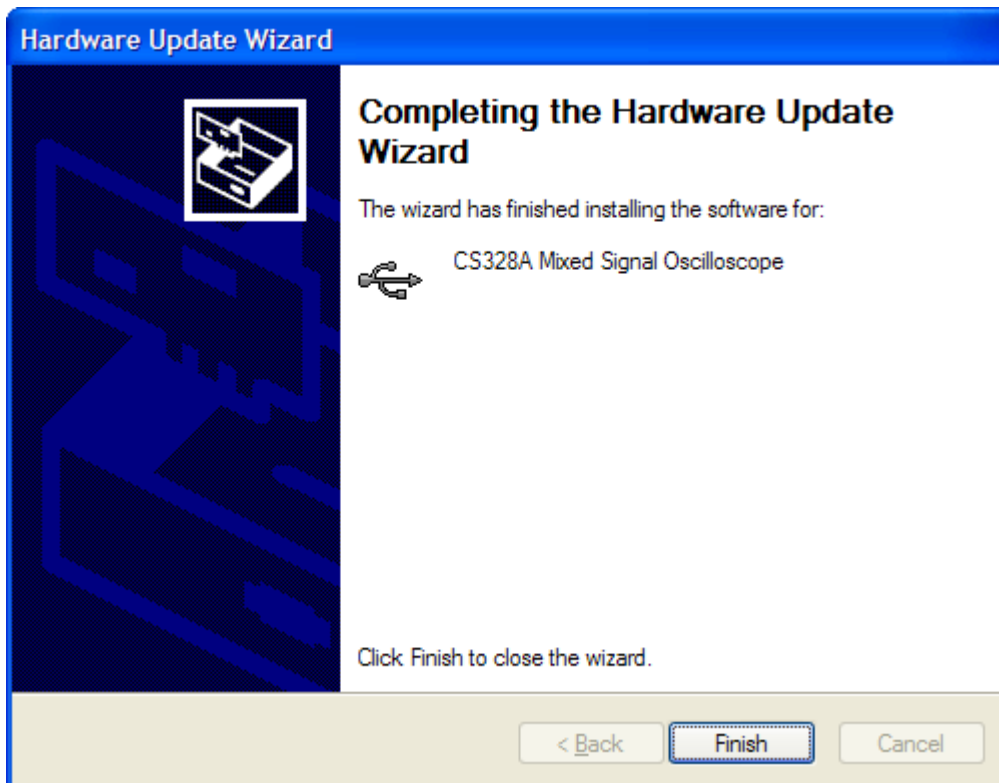
8. Click 'OK'.



9. Click 'Next'.



10. Click Next. Click Continue anyway.



11. Click Finish. The driver should be installed.