



plug & play instruments
oscilloscopes

Phone +64 9 524 7456
Fax +64 9 524 7457
Email support@cleverscope.com
28 Ranfurly Rd, Epsom
P.O. Box 26-527
Auckland 1023
New Zealand

19 Mar 2008 v1.1

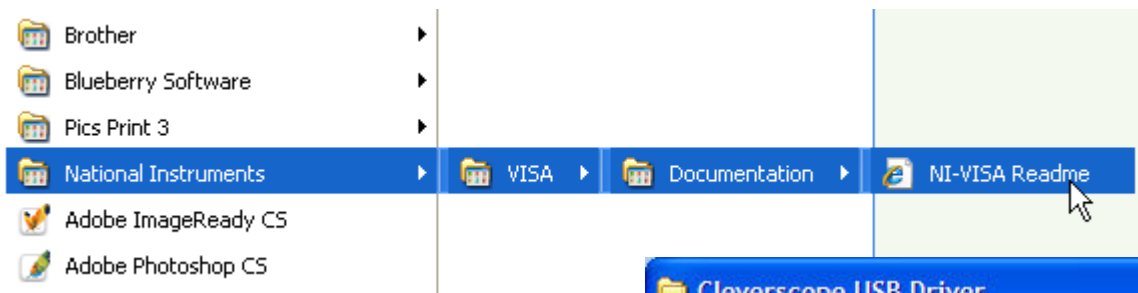
Installing or updating the driver (including Vista)

Cleverscope has recently updated the USB driver to be based on the National Instruments VISA system. This improves reliability, provides access to Vista 64, and allows us to implement an Ethernet based connection. All future versions of Cleverscope will use NI-VISA.

If you are not certain if you already have the NI-VISA driver installed, follow the instructions below.

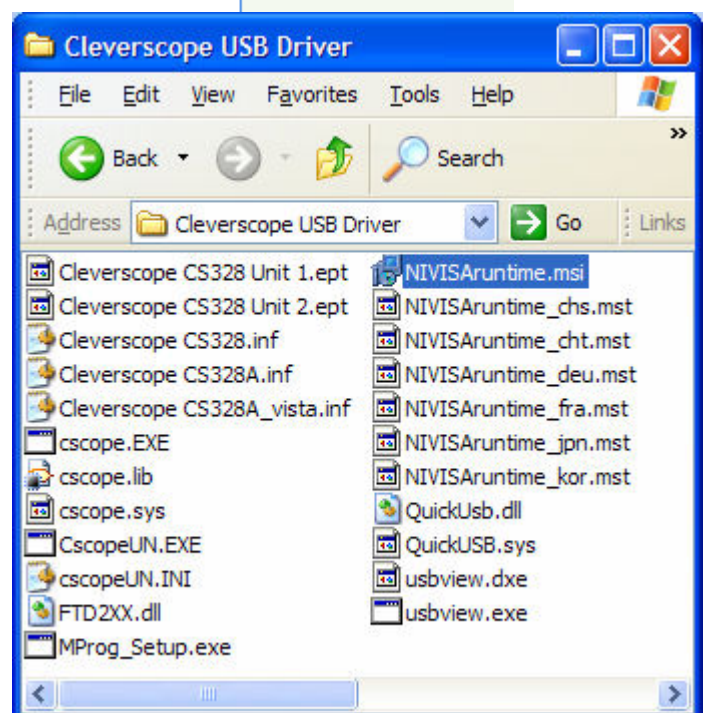
Follow these steps to check for NI-VISA and install the latest Cleverscope USB driver.

1. Unzip the update into your Program Files/Cleverscope Directory. This will place a directory labelled 'Cleverscope USB driver' into the Cleverscope directory.
2. Next you need to determine if NI-VISA is already installed. There is no need to install it again! Choose the 'Start' menu command and see if you can navigate to 'National Instruments/Visa/Documentation/NI-VISA Readme'. If so, you have NI-VISA installed. If not, you will need to install it now.

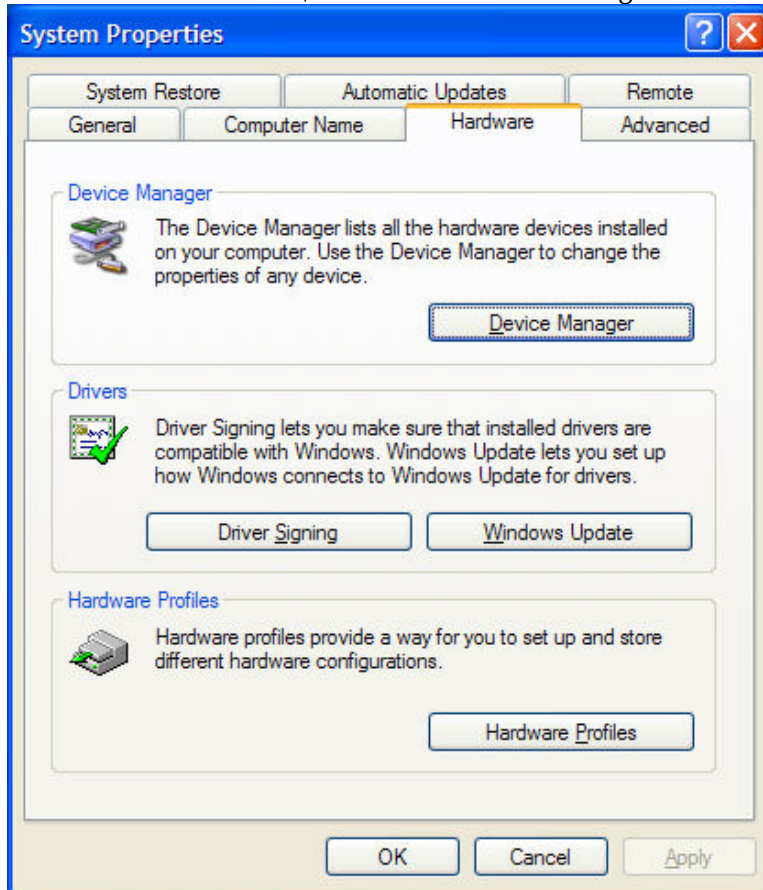


To install the NI-Visa system navigate to Program Files/Cleverscope/Cleverscope USB Driver. Locate the entry 'NIVISAruntime.msi' (the directory is shown here to the side). Double click on the NIVISAruntime.msi entry, and follow the instructions to install NI-VISA. If you have Vista 64, please contact us at support@cleverscope.com, because we need to supply you with a different NI-Visa.

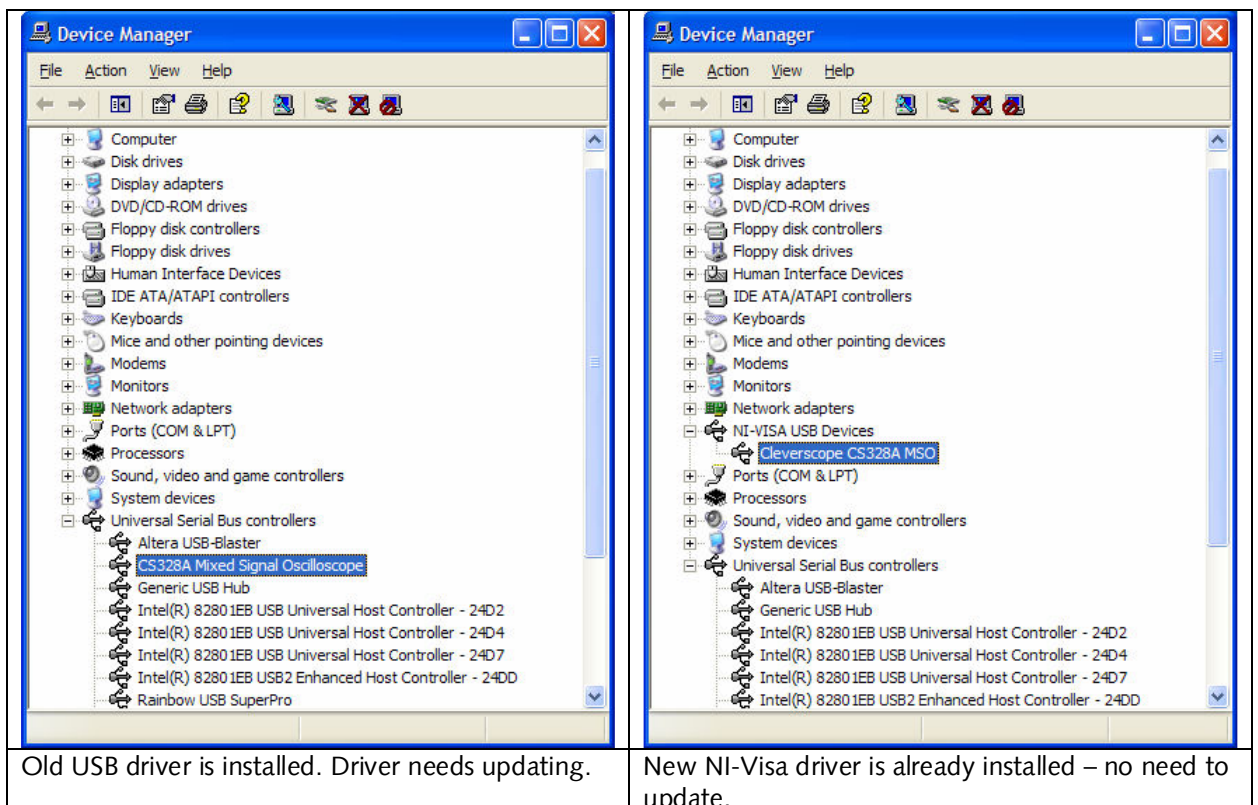
Once that's done, use Start/Settings/Control Panel and then click on the 'System' item.



- Choose the Hardware tab, and click on 'Device Manager'.



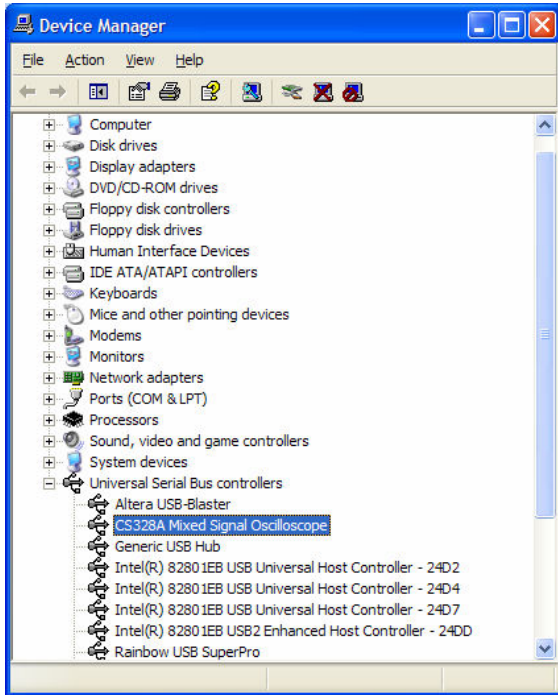
- Check the entries on the device manager display. You will see one of two displays:



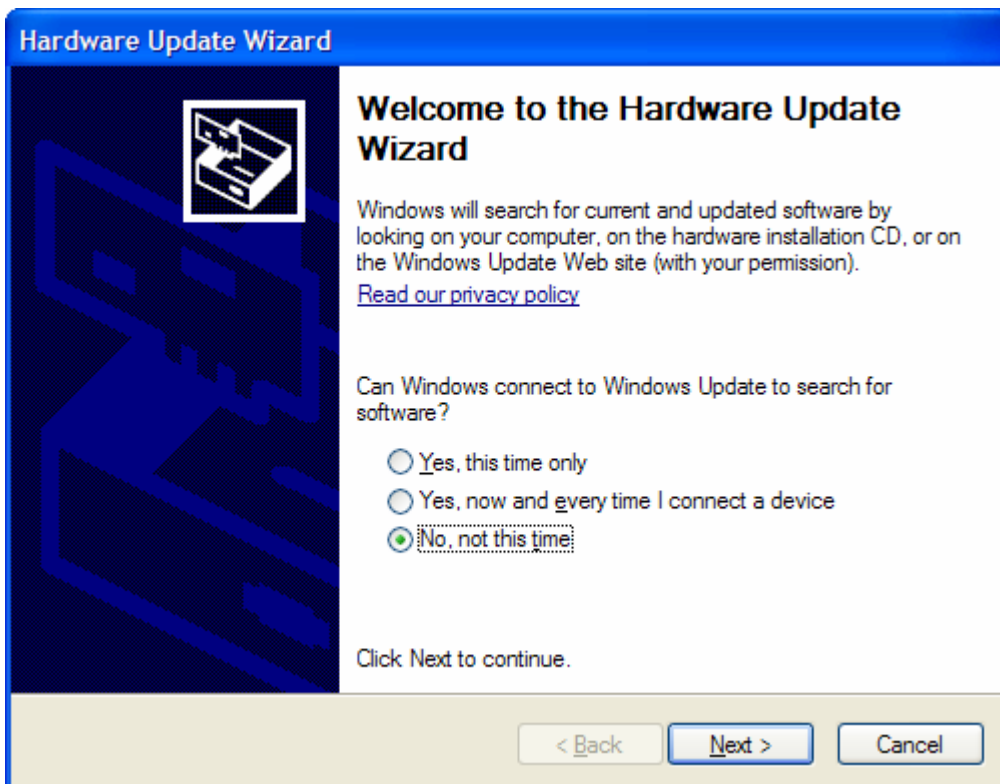
Old USB driver is installed. Driver needs updating.

New NI-Visa driver is already installed – no need to update.

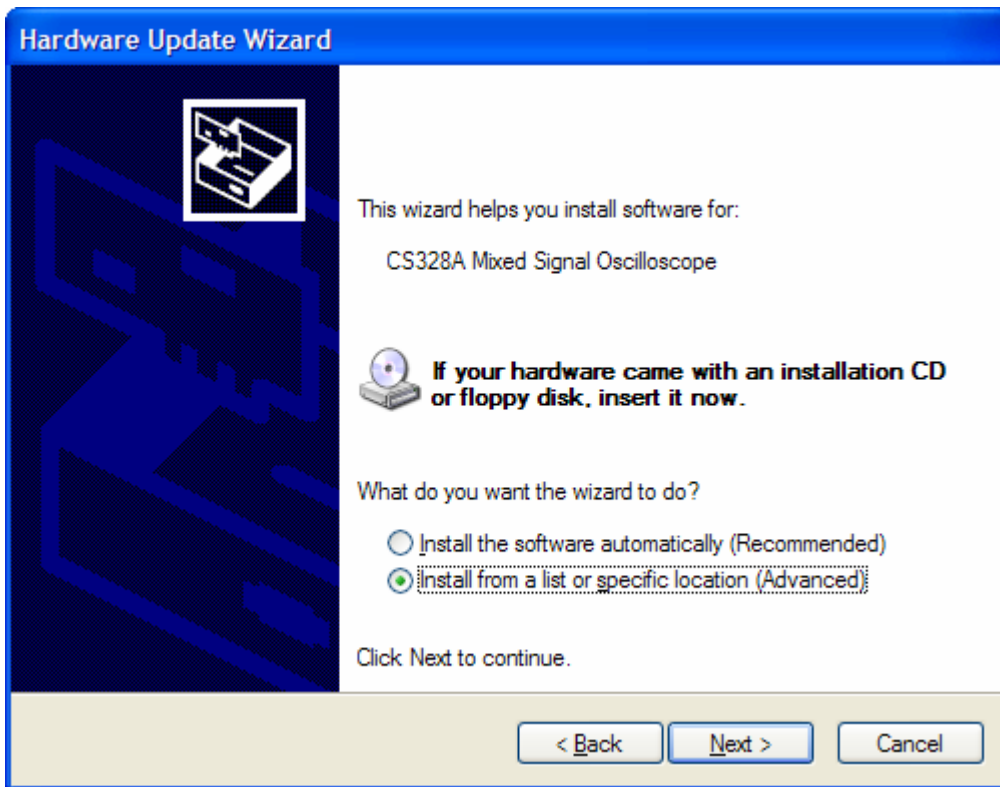
5. If the display shows the NI-Visa driver, then there is no need to update the driver. However, if the display shows a CS328A Mixed Signal Oscilloscope entry under Universal Serial Bus controllers, you will need to update the driver.
6. Right click on the 'CS328A Mixed Signal Oscilloscope Entry, and choose the 'Update Driver..' entry.



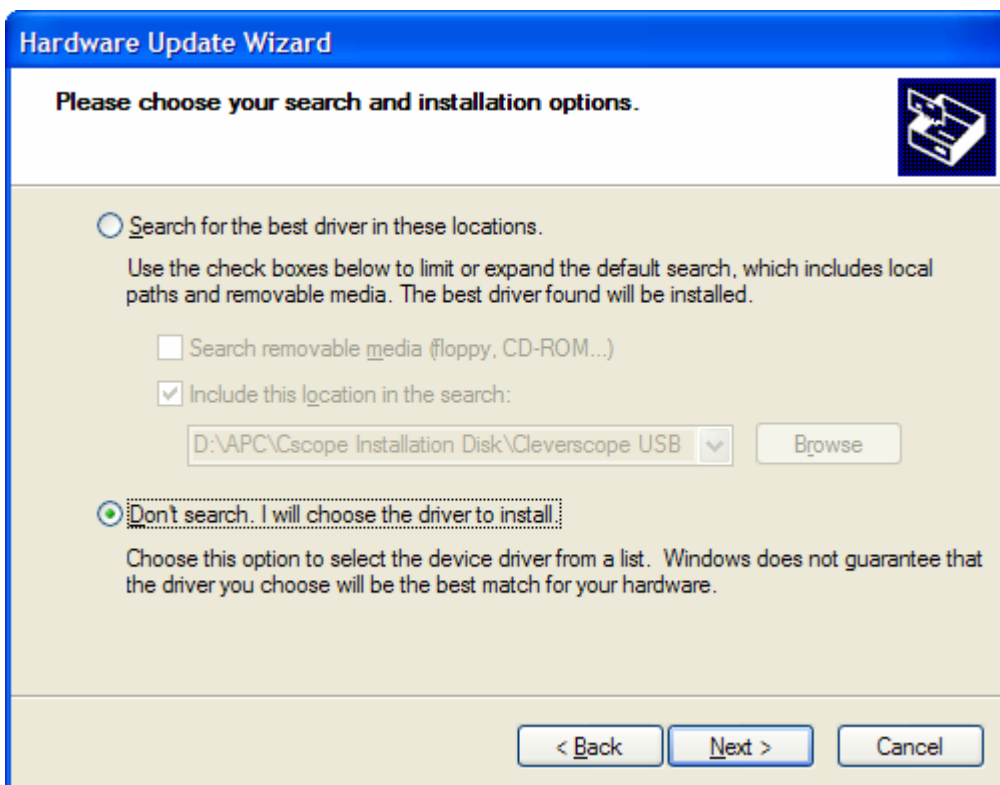
7. The 'Welcome to the Hardware Update Wizard' will appear. Choose 'No, not at this time', and click next'.



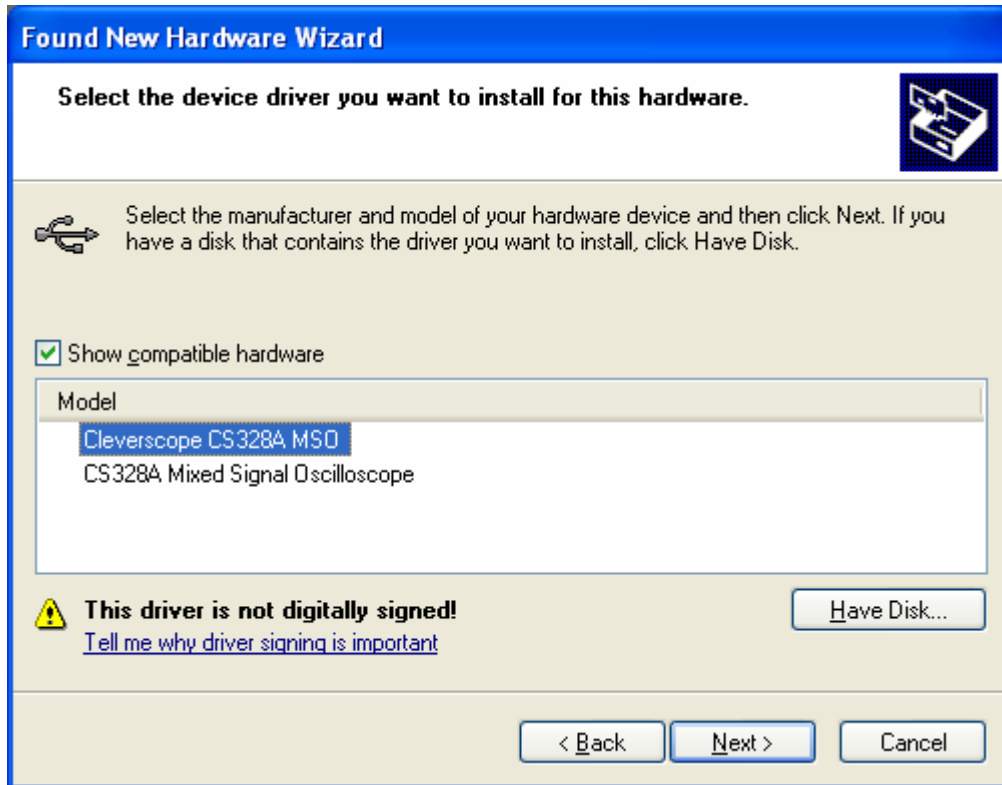
8. Click on 'Install from a specific location (Advanced)' and click Next



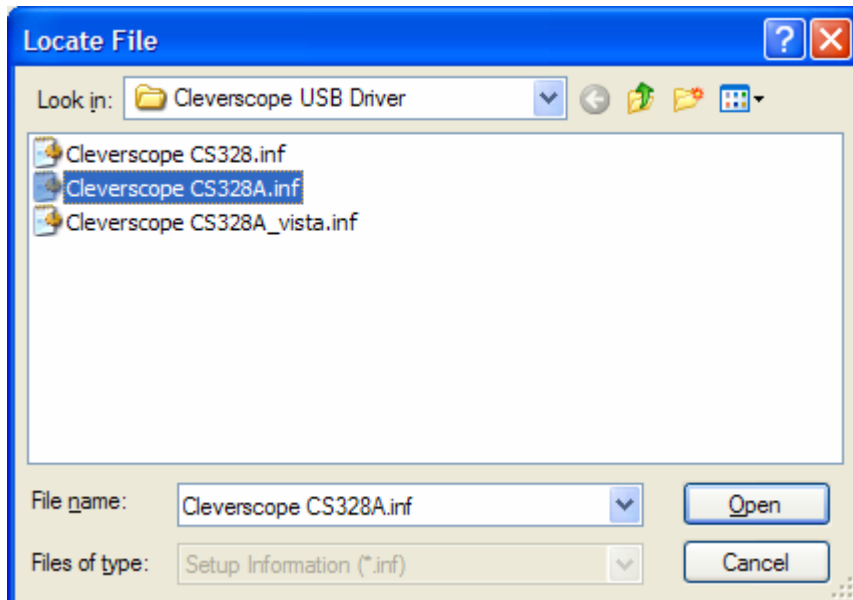
9. Click on 'Don't search. I will choose the driver to install', and click Next.



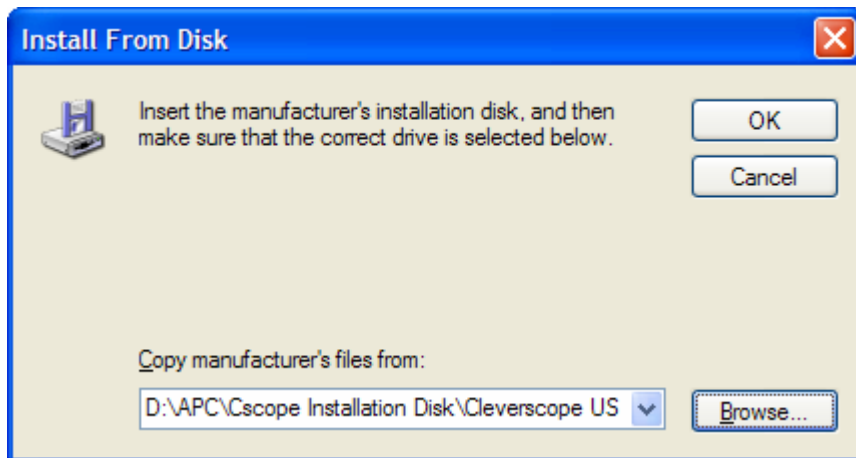
10. If you see 'Cleverscope CS328A MSO' or 'Cleverscope CS328A MSO Vista' choose the one appropriate to your operating system, and click Next. Move forward to step 14. If you cannot see either of these, choose any Cleverscope model, **but** click on 'Have Disk', and click Next.



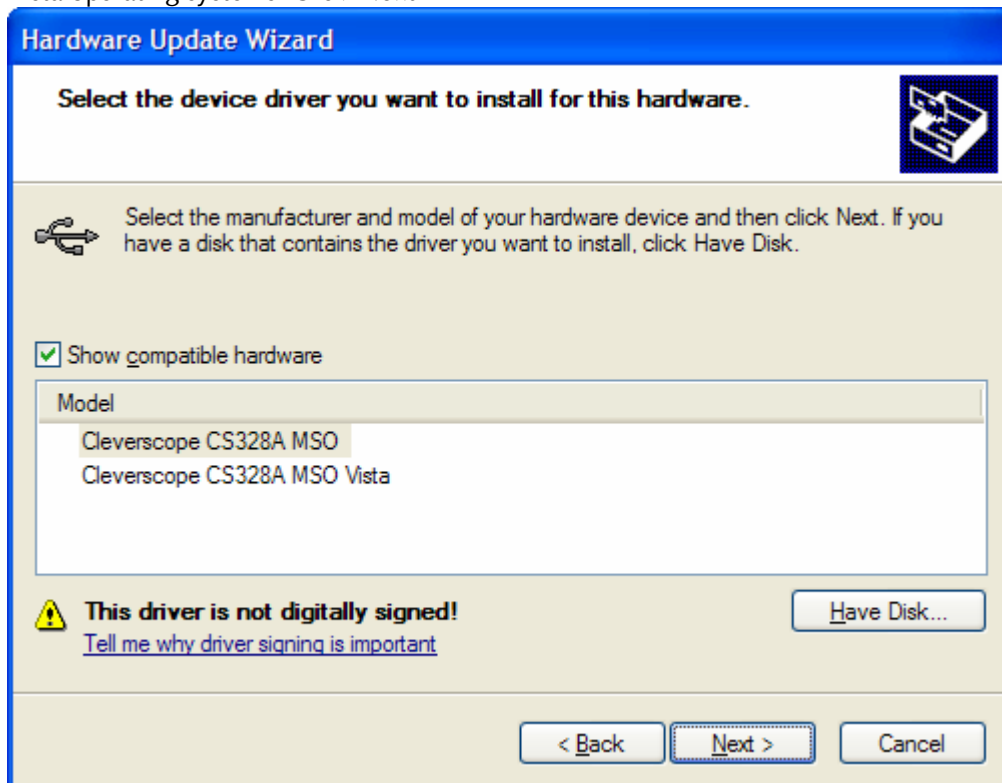
11. Navigate to the Program Files/Cleverscope/Cleverscope USB Driver directory, and choose either Cleverscope CS328A.inf for XP systems, or Cleverscope CS328A_vista.inf for Vista systems. Click 'Open'. If you have a Vista 64 system you will need to contact us at support@cleverscope.com.



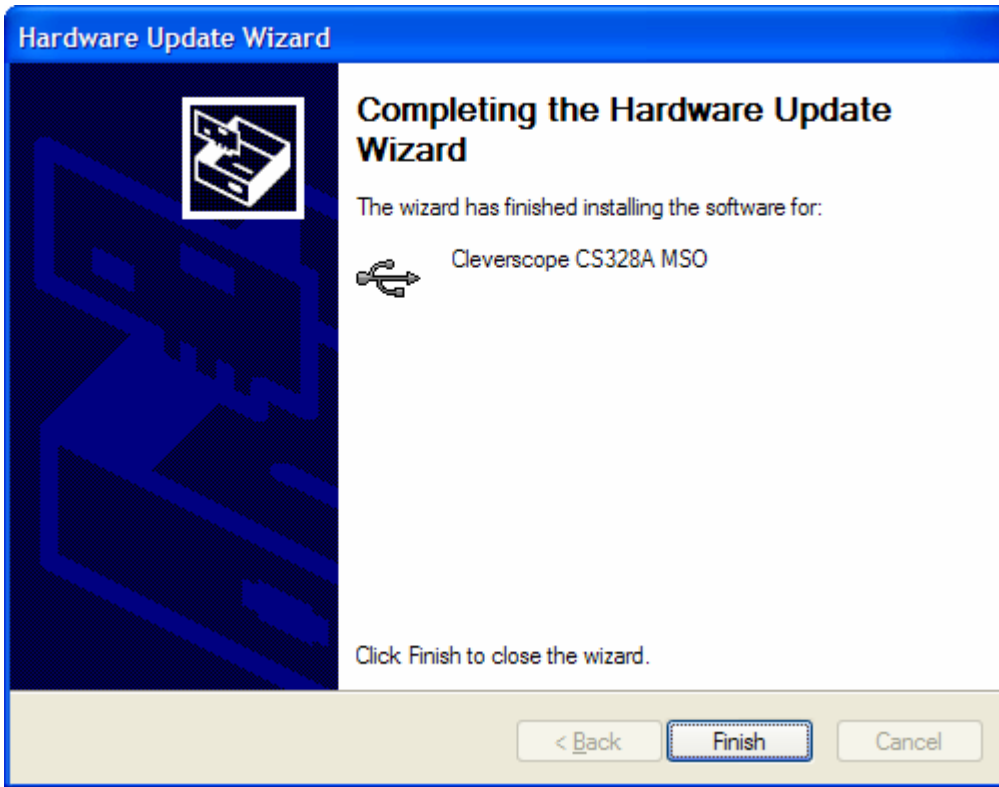
12. Click 'OK'.



13. Choose the correct description ('Cleverscope CS328A MSO' for XP or 'Cleverscope CS328A MSO Vista' for Vista operating systems. Click 'Next'.

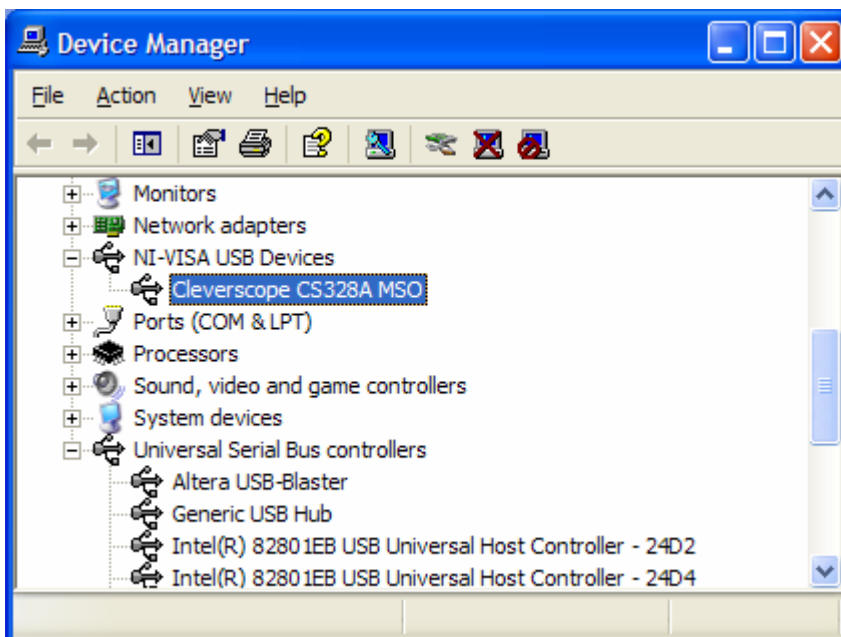


14. Click Next. Click Continue anyway.



15. Click Finish. The driver should be installed. Note that you will need to set the correct driver for every port on your machine. This is usually done automatically when you plug the Cleverscope into a port that has not been previously configured.

16. Now you should see the NI-Visa device as shown:



17. Start up the application, and verify communication using the 'Auto' button. Note that we suggest that you have firmware version 6430 or later loaded.