



DIN EN ISO 9001:2000  
certified



ADDI-DATA GmbH  
Dieselstraße 3  
D-77833 OTTERSWEIER



Technical support:  
+49 (0)7223 / 9493 - 0

*Preliminary version*

**Installation instructions**  
  
**for the ADDI-DATA boards**  
  
**PCI bus**

2<sup>nd</sup> edition 03/2004

## Copyright

All rights reserved. This manual is intended for the manager and its personnel.  
No part of this publication may be reproduced or transmitted by any means.  
Offences can have penal consequences.

## Guarantee and responsibility

Basically are effective our "general terms of delivery and payment". The manager receives them at the latest with the invoice. Claims for guarantee and responsibility in case of injuries and material damages are excluded, if they are due to one or some of the following causes:

- if the board has not been used for the intended purpose
- improper installation, operation and maintenance of the board
- if the board has been operated with defective safety devices or with not appropriate or non-functioning safety equipment
- non-observance of the instructions concerning: transport, storage, inserting the board, use, limit values, maintenance, device drivers
- altering the board at the user's own initiative
- altering the source files at the user's own initiative
- not checking properly the parts which are subject to wear
- disasters caused by the intrusion of foreign bodies and by influence beyond the user's control.

## Licence for ADDI-DATA software products

Read carefully this licence before using the standard software. The right for using this software is given to the customer, if he/she agrees to the conditions of this licence.

- this software can only be used for configuring ADDI-DATA boards.
- copying the software is forbidden (except for archiving/ saving data and for replacing defective data carriers).
- deassembling, decompiling, decoding and reverse engineering of the software are forbidden.
- this licence and the software can be transferred to a third party, so far as this party has purchased a board, declares to agree to all the clauses of this licence contract and the preceding owner has not kept copies of the software.

## Trademarks

Borland C and Turbo Pascal are registered trademarks of Borland International, INC.

Intel is a registered trademark of Intel Corporation.

AT, IBM, ISA and XT are registered trademarks of International Business Machines Corporation.

Microsoft, MS-DOS, Visual Basic and Windows are registered trademarks of Microsoft Corporation.

***The original version of this manual is in German. You can obtain it on request.***

# WARNING

In case of wrong uses and if the board is not used for the purpose it is intended:



◆ people may be injured,



◆ the board, PC and peripheral may be destroyed,



◆ the environment may be polluted

◆ **Protect yourself, the others and the environment!**

◆ **Read carefully the safety precautions (yellow leaflet).**

If this leaflet is not with the documentation, please contact us and ask for it.

◆ **Observe the instructions of the manual.**

Make sure that you do not forget or skip any step. We are not liable for damages resulting from a wrong use of the board.

◆ **Used symbols:**



**IMPORTANT!**

designates hints and other useful information.



**WARNING!**

It designates a possibly dangerous situation.

If the instructions are ignored the board, PC and/or peripheral may be destroyed.

<b>1</b>	<b>INTRODUCTION.....</b>	<b>1</b>
1.1	Structure of the CD1 "Standard drivers" .....	1
1.2	Structure of the CD2 "Technical manuals" .....	2
<b>2</b>	<b>INSTALLATION OF THE ADDIPACK BOARDS.....</b>	<b>3</b>
2.1	ADDIPACK board list.....	3
2.2	Delivered software .....	4
2.3	Installation under Windows NT.....	5
2.3.1	First software and board installation .....	5
2.3.2	Installation of the next ADDIPACK boards .....	5
2.4	Installation under Windows XP/2000/98.....	6
2.4.1	First software and board installation .....	6
2.4.2	Installation of the next ADDIPACK boards .....	7
2.5	Installation of the software samples .....	7
<b>3</b>	<b>INSTALLATION OF SERIAL INTERFACES.....</b>	<b>8</b>
3.1	Delivered software .....	8
3.2	Installation of 16-bit software drivers .....	8
3.3	Installation under Windows NT.....	9
3.3.1	First software and board installation .....	9
3.3.2	Installation of the next serial interface.....	9
3.4	Installation under Windows XP/2000/98.....	10
3.4.1	First software and board installation .....	10
3.4.2	Installation of the next serial interfaces .....	10
3.5	Installation of the software samples .....	11
<b>4</b>	<b>INSTALLATION OF THE OTHER PCI BOARDS.....</b>	<b>12</b>
4.1	List of the boards concerned .....	12
4.2	Delivered software .....	12
4.3	Installation of the 16-bit drivers .....	12
4.3.1	Installation under Windows 3.11 .....	12
4.4	Installation under Windows NT.....	13
4.5	Installation under Windows XP/2000/98.....	14
4.6	Installation of the software samples .....	15

<b>5</b>	<b>UPDATE OF THE DRIVERS AND INF FILES .....</b>	<b>16</b>
5.1	Update of the INF files .....	16
5.2	Update of the drivers and programs.....	16
<b>6</b>	<b>UNINSTALLING THE SOFTWARE .....</b>	<b>17</b>
6.1	Uninstalling ADDIPACK and ADDIREG.....	17
6.2	Clear the registration of a communication board.....	17
6.2.1	Clear the registration under Windows NT .....	17
6.2.2	Clear the registration under Windows XP/2000/98.....	17
<b>7</b>	<b>APPENDIX .....</b>	<b>18</b>

## Figures

Fig. 1-1: Readme.htm .....	1
Fig. 1-2: Navigation screen of CD2 .....	2

## Tables

Table 2-1: ADDIPACK board list .....	3
Table 4-1: List of the other PCI-boards .....	12
Table 7-1: Board for the (Compact)PCI bus.....	18

# 1 INTRODUCTION

## **i** IMPORTANT!

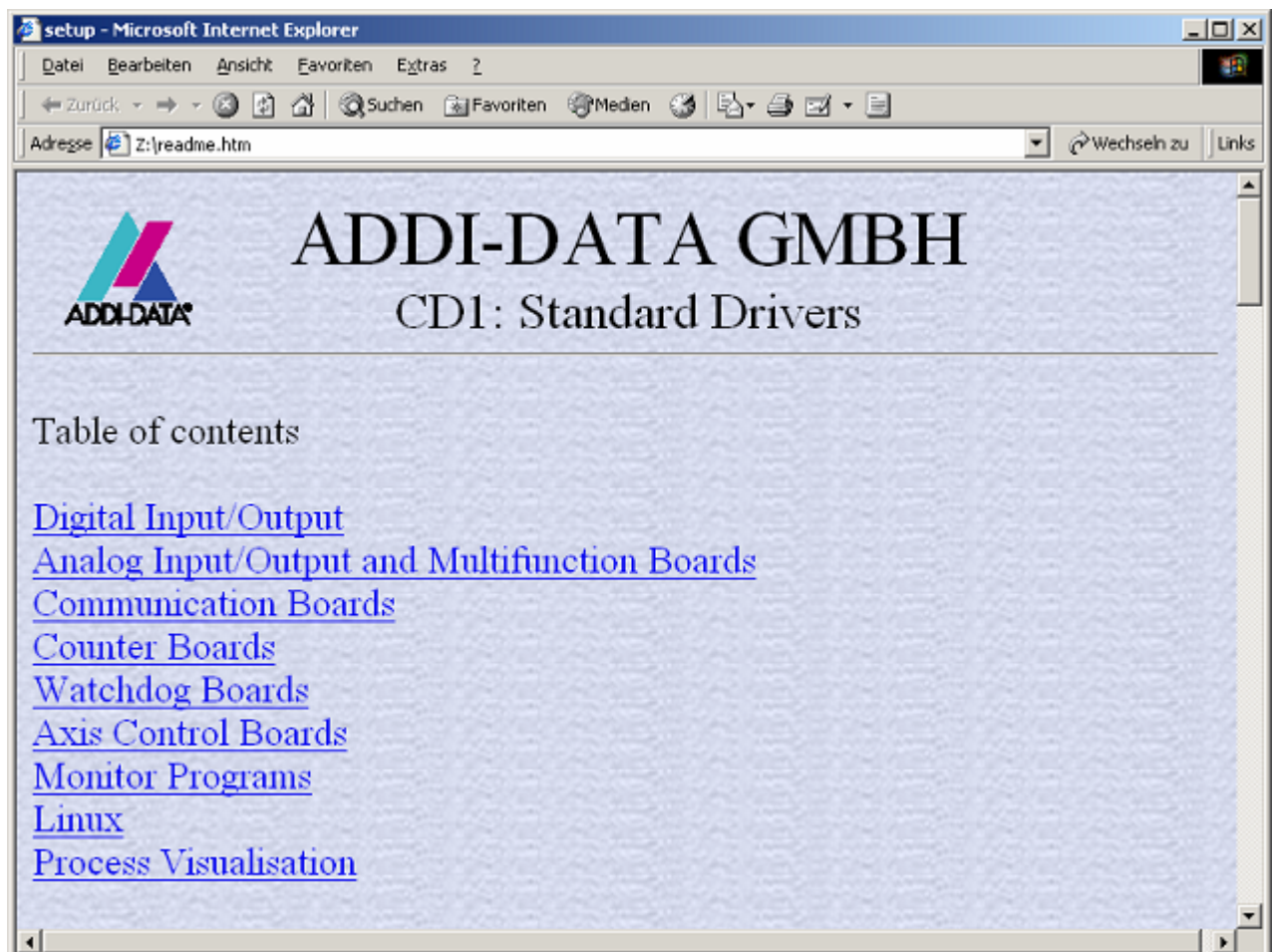
The installation process of the ADDI-DATA boards varies according to the product range and/or operating system.

Please check which chapters are dealing with your ADDI-DATA board and under which operating system you want to run the board.

## 1.1 Structure of the CD1 "Standard drivers"

You find a readme.htm file in the root-directory of the CD1. Through this file which lists all boards and programs, you can access the drivers, samples and programs you want to install.

Fig. 1-1: Readme.htm



You can also access the corresponding driver for your board in each board directory through the [board name]<sup>1</sup>-setup.htm file.

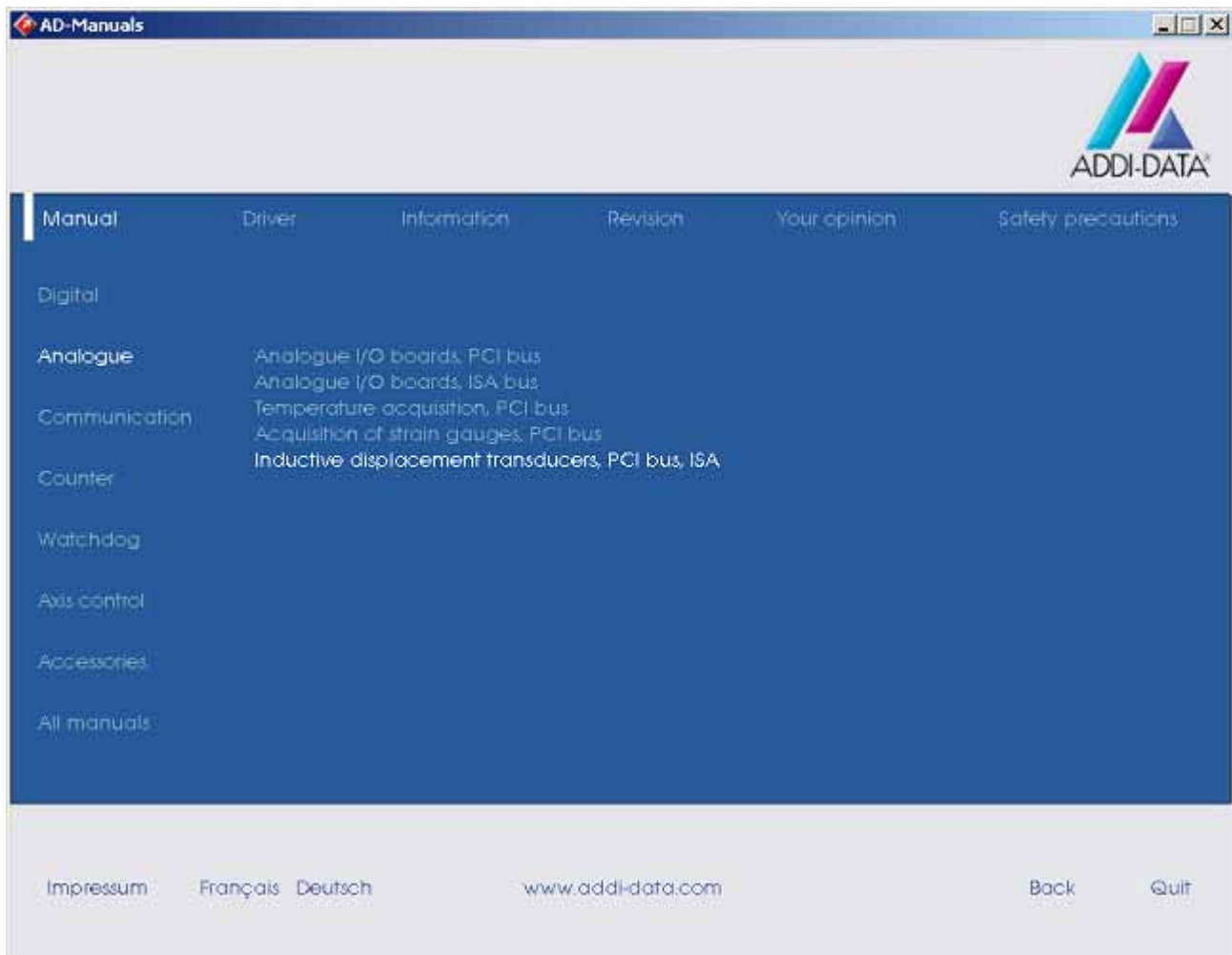
---

<sup>1</sup> e.g.: Apci035-setup.htm for the APCI-035 board

## 1.2 Structure of the CD2 "Technical manuals"

The AD-Manuals.exe file runs automatically. Select your language. Beside a short description of the board you can open and read the technical manual and further installation or configuration instructions.

Fig. 1-2: Navigation screen of CD2



## 2 INSTALLATION OF THE ADDIPACK BOARDS

### 2.1 ADDIPACK board list

Table 2-1: ADDIPACK board list

<b>Board</b>	<b>Description</b>
APCI-1016	Digital input board, 16 inputs, 24 V, PCI bus
APCI-1032	Digital input board, 32 inputs, 24 V, PCI bus
APCI-1024	Digital input board, 24 inputs, 0-60 V, PCI bus
APCI-1516	Digital input and output board, 8 inputs, 8 outputs, 24 V, PCI bus
APCI-1564	Digital input and output board, 32 inputs, 32 outputs, 24 V, PCI bus
APCI-2016	Digital output board, 16 outputs, 24 V, PCI bus
APCI-2032	Digital output board, 32 outputs, 24 V, PCI bus
APCI-2200	Relay output board, 8 or 16 relays, 8 digital inputs, 24 V, PCI bus
APCI-3200	Acquisition of thermocouple and RTDs, 4 dig. inputs, 3 dig. outputs, PCI bus
APCI-3300	Analog pressure measurement board, 4 dig. inputs, 3 dig. outputs, PCI bus
APCI-3122	Analog output board, 4 outputs, 12-bit, 10 dig. inputs, 12 dig. outputs, PCI bus
APCI-3501	Analog output board, 14-bit, 4 digital I/O, PCI bus
APCI-3504	Analog output board, 4 current or voltage outputs, PCI bus
APCI-3701	Acquisition of displacement transducers, PCI bus
APCI-035	Watchdog board, PCI bus



## 2.2 Delivered software

Each board is supplied with a driver CD-ROM (CD1) containing the ADDIPACK software package for Windows NT 4.0 and Windows XP/2000/98.

You will find further description for your ADDIPACK board in the CD2 "Technical manuals".

**ADDIPACK** is composed of following programs:

- **ADDIREG:** The ADDIREG registration program is a 32-bit program for Windows NT 4.0 and Windows XP/2000/98. The user can register all hardware information necessary to operate the ADDI-DATA PC boards.
- **ADDIDRIVER** contains API functions to operate the ADDI-DATA boards in 32 bits.
- **ADDevice Manager** configures the resources of the ADDI-DATA virtual board (See below).
- **ADDI-DATA virtual board:**  
ADDI-DATA software is based on the principle of a **virtual board**: it transposes the different functions (e.g. digital inputs, analog outputs, timer, ...) of all inserted ADDI-DATA boards as the functions of a single (virtual) board. The virtual board features a pool of functions, the functionality of which can be called up without calling a specific board.
- **ADDEVICE MAPPER** was specifically developed for the ADDIPACK boards to facilitate the management of the virtual board. With this program you can optimally adapt the virtual board to your application requirements.



### **IMPORTANT!**

Internet Explorer 6 or higher has to be installed on your PC.

## 2.3 Installation under Windows NT

### 2.3.1 First software and board installation

- ◆ **Log in with administrator rights.**
  - ◆ **Install and configure the boards one after the other. You will hence avoid configuration errors.**
1. Switch off the PC.
  2. Insert the first board.
  3. Start the PC.
  4. Insert the CD1 "Standard Software Drivers" in the CD drive.
  5. In Windows-Explorer open the [boardname]-setup.htm<sup>1</sup> file under CD:[boardname]<sup>2</sup> and click on the link "Installation of Addipack for WinNT4.0 from CD-ROM".

**In case ADDIPACK is already installed on your PC, you have to:**

- uninstall the current ADDIPACK version and manually install the latest version from the CD1 or
- register the board with the installed ADDIPACK version.

During the installation the windows "Addidriver Board clear/insert list" opens and displays information about the inserted ADDI-DATA boards.

6. Confirm with OK.
7. Proceed as indicated until the complete installation of ADDIPACK.

The setup.exe file for the installation of ADDIPACK is saved under:  
**CD:\ADDIPACK\WinNT40\Disk1.**

8. The installation process is completed. The board is ready to operate.
9. Install the ADDEVICE MAPPER program (if necessary, see 2.2)
10. Install the software samples (if required, see chapter 2.5).

### 2.3.2 Installation of the next ADDIPACK boards

11. Switch off the PC.
12. Install the next board
13. Repeat steps 3 to 8.

## **i**

### **IMPORTANT!**

To install the new version of ADDIPACK, please first uninstall the current version from your PC with the uninstall program of your operating system (See chapter 6.1).

---

<sup>1</sup> for example: Apci1024-setup.htm for the APCI-1024

<sup>2</sup> for example: CD:\Apci1024 for the APCI-1024

## 2.4 Installation under Windows XP/2000/98

### 2.4.1 First software and board installation

◆ **Log in with administrator rights.**

1. Switch off the PC.
2. Insert the first board.
3. Start the PC.

The Hardware Assistant (Hardware Wizard) starts the installation of the inf files and the driver.

4. Insert the CD1 "Standard Software Drivers" in the CD drive and proceed as indicated by the Hardware Assistant (Hardware Wizard).

The installation program "Install Shield Wizard" opens.

5. Follow the instructions given by the program.

**In case ADDIPACK is already installed on your PC, you have to:**

- uninstall the current ADDIPACK version and manually install the latest version from the CD1 or
- register the board with the installed ADDIPACK version.

During the installation the windows "Addidriver Board clear/insert list" opens and displays information about the inserted ADDI-DATA boards.

6. Confirm with OK.
7. Close all active windows.

The installation is completed. The board is ready to operate.

8. Install the ADDEVICE MAPPER program (if necessary, see 2.2)
9. Install the software samples. (See Paragraph 2.5)

If required, the setup.exe file of ADDIPACK is stored in:

**CD:\ADDIPACK\operating-system(\*)\Disk1.**

**(\*) Select the directory of the required operating system:**

- Win2000 for Windows 2000
- Win98 for Windows 98
- WinXP for Windows XP

## 2.4.2 Installation of the next ADDIPACK boards

◆ **Log in with administrator rights.**

10. Switch off the PC.

11. Insert the next board.

12. Repeat the steps 3 to 9. The CD1 "Standard Software Drivers" must be in the CD drive.

**i**

### **IMPORTANT!**

To install the new version of ADDIPACK, please first uninstall the current version from your PC with the uninstall program of your operating system (See chapter 6.1).

## 2.5 Installation of the software samples

◆ **Log in with administrator rights.**

Open the [boardname]-setup.htm<sup>1</sup> file under CD1\[boardname]<sup>2</sup> and proceed as indicated until the installation of the samples is completed.

◆ **Select the programming language.**

◆ **Follow the instructions of the installation program.**

After installing the board, you can install further samples at any time.

They are stored in:

**CD:\ADDIPACK\Samples\[Programming language]\[Function]\Disk1.**

**i**

### **IMPORTANT!**

Do only use the samples which are supported for the board.

Please consider the software tables the technical manual of each board (chapter 9).

---

<sup>1</sup> for example: Apci1024-setup.htm for the APCI-1024

<sup>2</sup> for example: CD:\Apci1024 for the APCI-1024

## 3 INSTALLATION OF SERIAL INTERFACES

### 3.1 Delivered software

Each board is supplied with a Driver CD-ROM (CD1) containing:

- ADDICOM programming examples with API functions for the ADDI-DATA boards in 32-bit.
- ADDIREG for Windows NT 4.0.



#### **IMPORTANT!**

**If you operate the board with Windows XP/2000/98, ADDIREG is not used.**

The device manager of Windows XP/2000/98 sets the configuration of the inserted board.

### 3.2 Installation of 16-bit software drivers

To install the board under MS-DOS or Windows 3.11, the "ADDICOM software driver" is available on request.

Please contact our hotline: + 49 (0) 7223 94 93 - 0.

## 3.3 Installation under Windows NT

### 3.3.1 First software and board installation

◆ **Log in with administrator rights.**

1. Switch off the PC.
2. Insert the first board.
3. Start the PC.
4. Open the [boardname]-setup.htm<sup>1</sup> file under CD1\[boardname]<sup>2</sup>
5. Click on the link "Installation of Addireg for WinNT from CD-ROM".

The installation program starts.

**In case Addireg is already installed on your PC, you have to:**

- uninstall the current ADDIREG version and manually install the latest version from the CD1 or
  - interrupt the installation process.
6. Follow the instructions of the program and quit the installation program by clicking on "Finish".
  7. Register the board in ADDIREG:
    - Start the ADDIREG program under Start\Programs\ADDIREG.
    - Insert the board through "Insert".
    - Register the board with "Set" then "Save".

Further information about ADDIREG and board configuration is given in the technical manual of each board.

8. Quit ADDIREG.

The board is ready to operate.

### 3.3.2 Installation of the next serial interface

Repeat the steps 1 to 3 and then steps 7 and 8 as described above.

---

<sup>1</sup> for example: Apci7500-setup.htm for the APCI-7500

<sup>2</sup> for example: CD:\Apci7500 for the APCI-7500

## 3.4 Installation under Windows XP/2000/98

### 3.4.1 First software and board installation

◆ **Log in with administrator rights.**

1. Switch off the PC.
2. Insert the first board.
3. Start the PC.

The Hardware Assistant (Hardware Wizard) starts the installation of the INF files and the driver.

4. Insert the CD1 "Standard Software Drivers" in the CD drive.
5. Proceed as indicated by the Hardware Assistant.



#### **IMPORTANT!**

The Hardware Assistant starts again.

Each board requires the installation of 2 hardware devices (PCI Bridge and UART). Installation process is thus started twice.

6. Follow the instructions given by the Hardware Assistant.
7. Close the Hardware Assistant with "Finish".

The other ports of the board are automatically installed by the Hardware Assistant.

8. Start the PC again.

The installation is completed. The board is ready to operate.

You can configure the interfaces individually in Windows Device Manager according to your requirements. (See delivered technical manual of the board).

### 3.4.2 Installation of the next serial interfaces

9. Repeat the steps 1 to 3 as described above.

The PC recognises the new installed boards. The installation is made automatically.

10. Start the PC again.

The installation is completed. The boards are ready to operate.

### 3.5 Installation of the software samples

1. Change to the CD drive.
2. Open the [boardname]-setup.htm<sup>1</sup> file under CD1\[boardname]<sup>2</sup>
3. Click on the link "Installation of ADDICOM" in board test and proceed as indicated until the installation of the software samples is completed.

The installation program gives you further instructions.

---

<sup>1</sup> for example: Apci7500-setup.htm for the APCI-7500

<sup>2</sup> for example: CD:\Apci7500 for the APCI-7500



## 4 INSTALLATION OF THE OTHER PCI BOARDS

### 4.1 List of the boards concerned

Table 4-1: List of the other PCI-boards

Board	Description
APCI-1500 (CPCI-1500)	Digital input and output board, 8 inputs, 8 outputs, 24 V
APCI-3001 (CPCI-3001)	Analog input board
APCI-3120 (CPCI-3001)	Analog input and output board
APCI-1710 (CPCI-1710)	Multifunction counting board

### 4.2 Delivered software

The board is supplied with a Driver CD-ROM (CD1) containing:

- the ADDIREG configuration program for Windows NT 4.0 and Windows XP/2000/98,
- Standard software drivers for the ADDI-DATA boards,
- specific programming tools: for example the SET1710 program for configuring the function modules of the APCI-1710, CPCI-1710, all functions implemented for the counter board or the ADDIMON test program (APCI-1500, APCI-3001, APCI-3120),
- software examples.

### 4.3 Installation of the 16-bit drivers



#### IMPORTANT!

The MS-DOS driver is delivered with the board on request.

Please contact our hotline: + 49 (0) 7223 94 93 - 0.

#### 4.3.1 Installation under Windows 3.11

- ◆ **Log in with administrator rights.**
  - ◆ **Install and configure the boards one after the other.** You can thus avoid configuration errors.
1. Switch off the PC.
  2. Insert the fist board
  3. Start the PC.
  4. Insert the CD1 "Standard Software Drivers" in the CD drive.
  5. In Windows-Explorer open the [boardname]-setup.htm<sup>1</sup> file under **CD:\[boardname]**<sup>1</sup> and click on the link "Drivers for... Windows 3.11".

<sup>1</sup> for example: Apci1500-setup.htm for the APCI-1500

## 4.4 Installation under Windows NT

- ◆ **Log in with administrator rights.**
- ◆ **Install and configure the boards one after the other. You will hence avoid configuration errors.**
- 1. Switch off the PC.
- 2. Insert the first board.
- 3. Start the PC.
- 4. Insert the CD1 "Standard Software Drivers" in the CD drive.
- 5. In Windows-Explorer open the [boardname]-setup.htm<sup>2</sup> file under **CD:[boardname]**<sup>3</sup>
- 6. Install ADDIREG configuration program by clicking on "Installation of ADDIREG from CD-ROM".

The installation program starts.

**In case ADDIREG is already installed on your PC, you have to :**

- uninstall the current ADDIREG version and manually install the latest version from the CD1 or
- cancel the installation process.
- 7. If the message "Der Keyboard Kernel wurde noch nicht gestartet, ... soll der Kernel jetzt gestartet werden?" (Problem when installing the system) is displayed by starting the program,
  - uninstall the ADDIREG program through Start/Settings/Control panel/Add or remove software
  - and install ADDIREG anew.
- 8. Proceed as indicated and close the installation program with "Finish".
- 9. Register the board in ADDIREG
  - Start ADDIREG through start/programs/ADDIREG
  - Insert the selected board through "Insert"
  - Register the board with "Set" and then "Save".

You will find further information about ADDIREG and the board registration in the technical manual of your board.

- 10. Close ADDIREG with "Quit".
- 11. Open the [boardname]-setup.htm file and install the driver for Windows NT 4.0 by clicking on "Driver for Windows XP/2000/NT4.0/98".

The board is ready to operate.

---

<sup>1</sup> for example: CD:\Apci1500 for the APCI-1500

<sup>2</sup> for example: Apci1500-setup.htm for the APCI-1500

<sup>3</sup> for example: CD:\Apci1500 for the APCI-1500

## 4.5 Installation under Windows XP/2000/98

1. Switch off the PC.
2. Insert the board.
3. Start the PC.

The Hardware Assistant starts the installation of the INF files and the driver.

4. Insert the CD1 "Standard Software Drivers" in the CD drive and proceed as indicated by the Hardware Assistant until the complete installation.

The installation program "Install Shield Wizard" starts.

5. Follow the instructions of the program.
6. Close all open windows with "Finish"
7. Install the ADDIREG configuration program by clicking on the link "Install of ADDIREG from CD-ROM".

The installation program starts.

**In case ADDIREG is already installed on your PC, you have to :**

- uninstall the current ADDIREG version and manually install the latest version from the CD1 or
- cancel the installation process.

8. Follow the instructions of the program and close the active windows with "Finish".
9. Register the board in ADDIREG.
  - Start ADDIREG through start/programs/ADDIREG
  - Insert the selected board through "Insert"
  - Register the board with "Set" and then "Save".

You will find further information about ADDIREG and the board registration in the technical manual of your board.

10. Close ADDIREG with "Quit".
11. Open the [boardname]-setup.htm file and install the driver by clicking on "Driver for Windows XP/2000/NT4.0/98".
12. Close all open windows.
13. Start the PC again.

The installation is completed. The board is ready to operate.

## 4.6 Installation of the software samples

### ◆ Change to the CD drive.

Open the [boardname]-setup.htm<sup>1</sup> file under CD:\[boardname]<sup>2</sup> and select the wished software samples. Follow the instructions given by the installation program.

### ◆ Select the required programming language.

Further instructions are given by the installation program.

After installing the board you can install the wished samples at any time. They are stored in:

CD:\[**Board name**]\Samples\[Programming language]\Disk1 or

CD:\[**APCI1710**]\[Operating System]\Samples\[Programming language]\[Function]\Disk1

On your PC the software samples are then stored in  
ADDIDATA\16bit\[Board name]\[Programming language] or  
ADDIDATA\32bit\[Board name]\[Programming language].

---

<sup>1</sup> for example: Apci1500-setup.htm for the APCI-1500

<sup>2</sup> for example: CD:\Apci1500 for the APCI-1500

## 5 UPDATE OF THE DRIVERS AND INF FILES

Should you download the latest drivers from our website or receive files from our hotline service, do not forget to update the drivers and inf files installed on your PC.

### 5.1 Update of the INF files

Create an archive directory INF\_ARCHIVE in C:\ADDIDATA.

Search in [Windows]\INF<sup>1</sup> on your hard disk all INF and PNF files, which begin with oem[numbers]. With the "Search or Find" function of Windows Explorer search for oem\*.inf and oem\*.pnf files with ADDI-DATA as word or phrase included in the file.



#### **IMPORTANT!**

The INF directory is an hidden folder.

Should it not be displayed in the Windows Explorer go to the Tools menu and Select "folder options". On the "view" tab enable "Show hidden files and folders".

**Drag** all the files with the "Search or Find" function of Windows Explorer **and drop** them in the INF\_Archive directory.

The files are not to be present in the INF directory anymore. Only in this case and by the next installation of an ADDI-DATA board the operating system will hold the current INF files from the given data carrier and store them.

If you do not proceed as indicated above, the old inf files will be used each time you want to install a new board.

### 5.2 Update of the drivers and programs

If you want to update ADDI-DATA programs or drivers, you have first to uninstall the current version from your PC.

Uninstall the software with the uninstall program of your operating system.

You find this function under:

- Start/(Settings/)Control Panel/Add or Remove Programs

Select the board driver or program (e.g. ADDIREG or ADDIPACK) and click on "Remove". Proceed as indicated by the uninstall program.

Install the new version from your data carrier according to the installation instructions which correspond to your board and used operating system (see former paragraphs).

---

<sup>1</sup> e.g.: Winnt/INF

## 6 UNINSTALLING THE SOFTWARE

### 6.1 Uninstalling ADDIPACK and ADDIREG

You can uninstall the wished program through the "Add or Remove Programs" function of your operating system.

It is to be found in:

- Start/(Settings/)Control panel/Add or remove programs
- Select ADDIPACK Version xx or ADDIREG and click on "Remove". Further information for uninstalling the programs are displayed.

Search in [Windows]\INF<sup>1</sup> on your hard disk all INF and PNF files, which begin with oem[numbers]. With the "Search or Find" function of Windows Explorer search for oem\*.inf and oem\*.pnf files with ADDI-DATA as word or phrase included in the file.



#### **IMPORTANT!**

The INF directory is an hidden folder.

Should it not be displayed in the Windows Explorer go to the Tools menu and Select "folder options". On the "view" tab enable "Show hidden files and folders".

**Delete** all the files found with the "Search or Find" function of Windows Explorer.

The files are not to be present in the INF directory anymore. Only in this case and by the next installation of an ADDI-DATA board the operating system will hold the current INF files from the given data carrier and store them.

If you do not proceed as indicated above, the old inf files will be used each time you want to install a new board.

### 6.2 Clear the registration of a communication board

#### 6.2.1 Clear the registration under Windows NT

Start ADDIREG and select the board to be cleared.

A single board is cleared with "Clear".

If you want to clear all boards, click on "Deinstall registration". (See the corresponding paragraph in the technical manual of the communication board)

#### 6.2.2 Clear the registration under Windows XP/2000/98

Open the Device Manager under Start/(Settings/)Control panel/System and click on the board to be deleted and proceed as indicated until the board is no more displayed.

---

<sup>1</sup> e.g.: Winnt/INF

## 7 APPENDIX

Table 7-1: Board for the (Compact)PCI bus

Board	Product range	ADDIPACK board		See Chapter
		Yes	No	
APCI-035	Watchdog board	x		2
APCI-1016	Digital board	x		2
APCI-1024	Digital board	x		2
APCI-1032	Digital board	x		2
APCI-1500/CPCI-1500	Digital board		x	4
APCI-1516	Digital board	x		2
APCI-1564	Digital board	x		2
APCI-1710/CPCI-1710	Counter board		x	4
APCI-2016	Digital board	x		2
APCI-2032	Digital board	x		2
APCI-2200	Digital board	x		2
APCI-3001/CPCI-3001	Analog board		x	4
APCI-3120/CPCI-3120	Analog board		x	4
APCI-3200	Analog board	x		2
APCI-3122	Analog board	x		2
APCI-3300	Analog board	x		2
APCI-3501	Analog board	x		2
APCI-3504	Analog board	x		2
APCI-3701	Analog board	x		2
APCI-7300	Serial interface		x	3
APCI-7420	Serial interface		x	3
APCI-7500	Serial interface		x	3
APCI-7800	Serial interface		x	3
CPCI-7500	Serial interface		x	3