



**DIN EN ISO9001  
certified**



**ADDI-DATA GmbH  
Dieselstraße 3  
D-77833 OTTERSWEIER**



**Technical support:  
+49 (0)7223 / 9493 - 0**

*Preliminary version*



**Installation instructions  
for the ADDI-DATA boards  
ISA bus**

1<sup>st</sup> edition 06/2003

## Copyright

All rights reserved. This manual is intended for the manager and its personnel.  
No part of this publication may be reproduced or transmitted by any means.  
Offences can have penal consequences.

## Guarantee and responsibility

Basically are effective our "general terms of delivery and payment". The manager receives them at the latest with the invoice. Claims for guarantee and responsibility in case of injuries and material damages are excluded, if they are due to one or some of the following causes:

- if the board has not been used for the intended purpose
- improper installation, operation and maintenance of the board
- if the board has been operated with defective safety devices or with not appropriate or non-functioning safety equipment
- non-observance of the instructions concerning: transport, storage, inserting the board, use, limit values, maintenance, device drivers
- altering the board at the user's own initiative
- altering the source files at the user's own initiative
- not checking properly the parts which are subject to wear
- disasters caused by the intrusion of foreign bodies and by influence beyond the user's control.

## Licence for ADDI-DATA software products

Read carefully this licence before using the standard software. The right for using this software is given to the customer, if he/she agrees to the conditions of this licence.

- this software can only be used for configuring ADDI-DATA boards.
- copying the software is forbidden (except for archiving/ saving data and for replacing defective data carriers).
- deassembling, decompiling, decoding and reverse engineering of the software are forbidden.
- this licence and the software can be transferred to a third party, so far as this party has purchased a board, declares to agree to all the clauses of this licence contract and the preceding owner has not kept copies of the software.

## Trademarks

Borland C and Turbo Pascal are registered trademarks of Borland International, INC.

Intel is a registered trademark of Intel Corporation.

AT, IBM, ISA and XT are registered trademarks of International Business Machines Corporation.

Microsoft, MS-DOS, Visual Basic and Windows are registered trademarks of Microsoft Corporation.

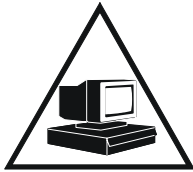
***The original version of this manual is in German. You can obtain it on request.***

# WARNING

**In case of wrong uses and if the board is not used for the purpose it is intended:**



◆ **people may be injured,**



◆ **the board, PC and peripheral may be destroyed,**



◆ **the environment may be polluted**

◆ **Protect yourself, the others and the environment!**

◆ **Read carefully the safety precautions (yellow leaflet).**

If this leaflet is not with the documentation, please contact us and ask for it.

◆ **Observe the instructions of the manual.**

Make sure that you do not forget or skip any step. We are not liable for damages resulting from a wrong use of the board.

◆ **Used symbols:**



**IMPORTANT!**

designates hints and other useful information.



**WARNING!**

It designates a possibly dangerous situation.

If the instructions are ignored the board, PC and/or peripheral may be destroyed.



<b>1</b>	<b>INTRODUCTION.....</b>	<b>1</b>
1.1	Structure of the CD1 "Standard drivers" .....	1
1.2	Structure of the CD2 "Technical manuals" .....	2
<b>2</b>	<b>INSTALLATION OF ISA BOARDS .....</b>	<b>3</b>
2.1	Installation of 16-bit drivers .....	3
2.1.1	Installation under Windows 3.11 .....	3
2.2	Installation under Windows NT .....	4
2.3	Installation under Windows XP/2000/98 .....	5
<b>3</b>	<b>INSTALLATION OF SOFTWARE SAMPLES .....</b>	<b>7</b>
3.1	Delivered software .....	7
<b>4</b>	<b>UPDATE OF THE DRIVERS AND PROGRAMS .....</b>	<b>8</b>
<b>5</b>	<b>UNINSTALLING THE SOFTWARE .....</b>	<b>9</b>
5.1	Uninstalling drivers and programs .....	9
5.2	Clear the registration of a communication board.....	9
5.2.1	Clear the registration under Windows NT.....	9
5.2.2	Clear the registration under Windows XP/2000/98 .....	9

## Figures

Fig. 1-1:	Readme.htm.....	1
Fig. 1-2:	Navigation screen of CD2 .....	2



# 1 INTRODUCTION

## **i** IMPORTANT!

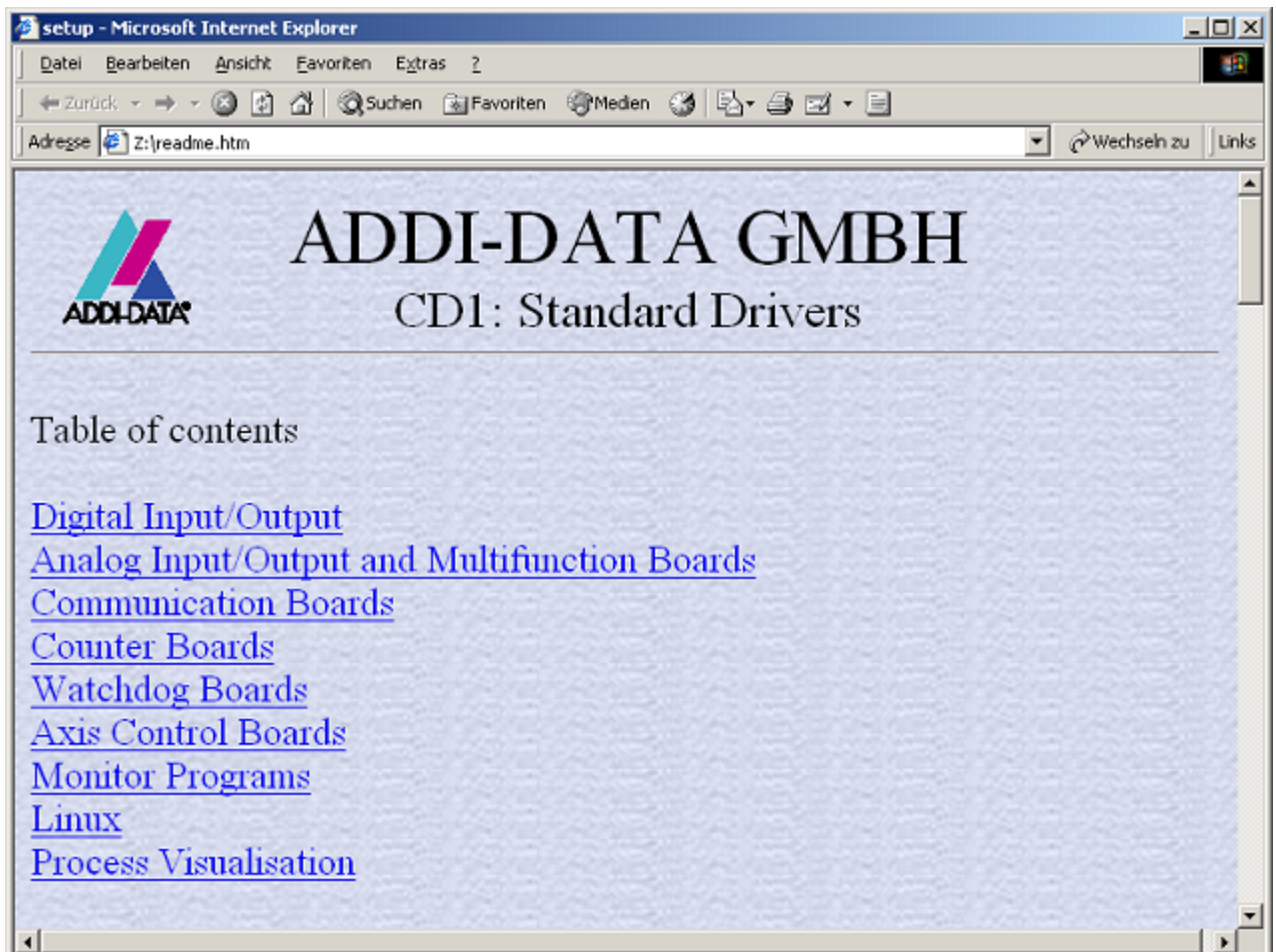
The installation process of the ADDI-DATA boards varies according to the operating system.

Please check which chapter(s) is concerning your ADDI-DATA board and the used operating system.

## 1.1 Structure of the CD1 "Standard drivers"

You find a readme.htm file in the root-directory of the CD1. Through this file which lists all boards and programs, you can access the drivers, samples and programs you want to install.

**Fig. 1-1: Readme.htm**



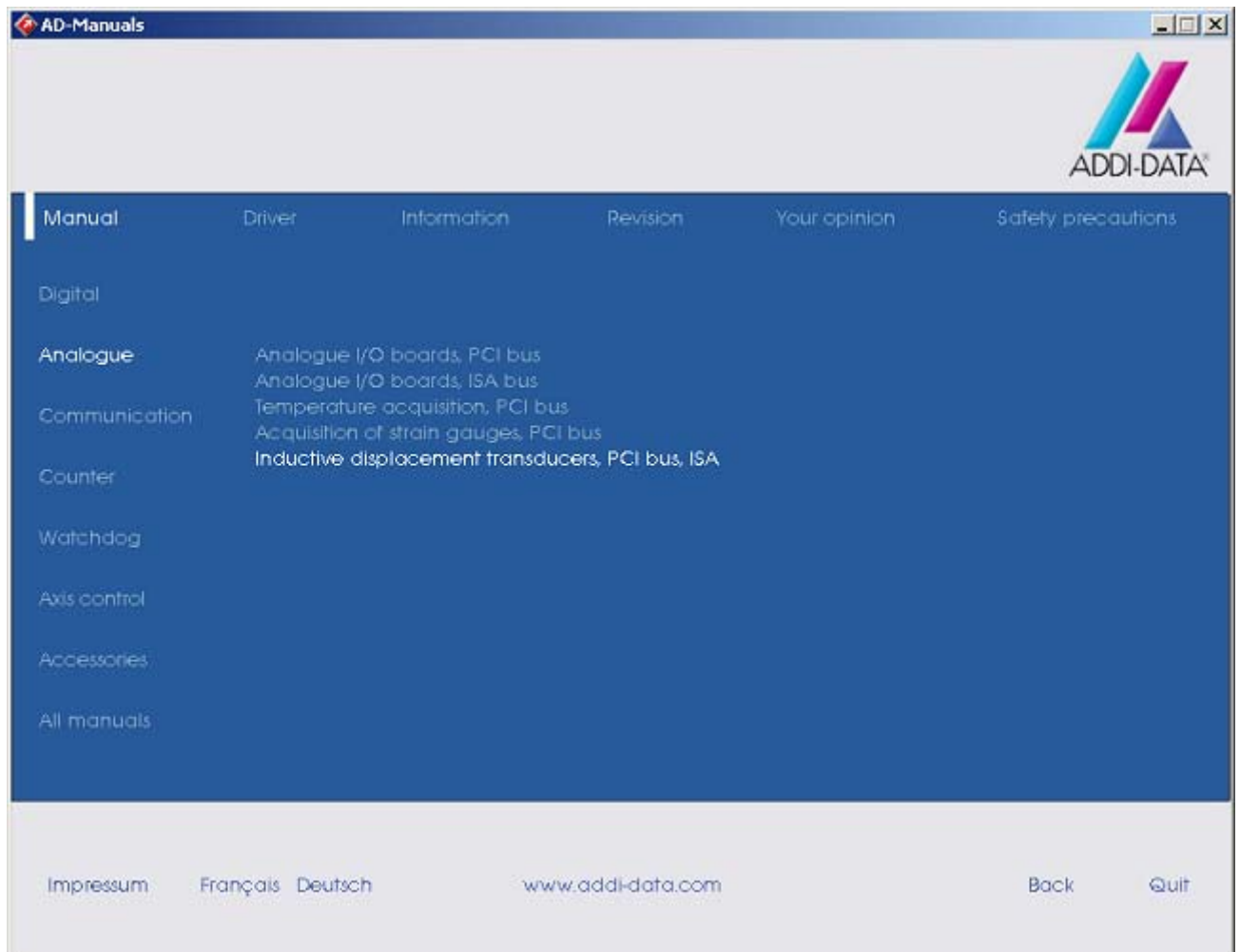
You can also access the corresponding driver for your board in each board directory through the [board name]<sup>1</sup>-setup.htm file.

<sup>1</sup> e.g.: Pa2000-setup.htm for the PA 2000 board

## 1.2 Structure of the CD2 "Technical manuals"

The AD-Manuals.exe file runs automatically. Select your language. Beside a short description of the board you can open and read the technical manual and further installation or configuration instructions.

**Fig. 1-2: Navigation screen of CD2**





## 2 INSTALLATION OF ISA BOARDS

### 2.1 Installation of 16-bit drivers



#### **IMPORTANT!**

MS-DOS drivers are only delivered on request.

Please contact our hotline service: + 49 (0) 7223 - 9493 - 0

#### 2.1.1 Installation under Windows 3.11

- ◆ **Log in with administrator rights.**
  - ◆ **Install and configure the boards one after the other. You will hence avoid configuration errors.**
1. Switch off the PC.
  2. Make sure that the set base address is free on your PC. (See technical manual of your board).
  3. Select a free interrupt line and if required set it through jumpers (See technical manual of the board for more information)
  4. Insert the first board.
  5. Start the PC.
  6. Insert the CD1 "Standard Software Drivers" in the CD drive.
  7. In Windows-Explorer open the [boardname]-setup.htm<sup>1</sup> file under CD/[boardname]<sup>2</sup> and click on the link "Drivers for ... Windows 3.11".

In case no browser is installed on your PC, you will find the setup.exe file for installing the driver in CD/[boardname]/Win311/Driver/Disk1.

For installing the samples proceed in the same way (if samples are available).

---

<sup>1</sup> for example: Pa2000-setup.htm for the PA 2000

<sup>2</sup> for example: CD/Pa2000 for the PA 2000

## 2.2 Installation under Windows NT

- ◆ **Log in with administrator rights.**
  - ◆ **Install and configure the boards one after the other. You will hence avoid configuration errors.**
1. Switch off the PC.
  2. The base address set on the board must free on the PC. (See technical manual of the board).  
To check it open the window under Start/Programs/Administrative tools (common)/Windows NT diagnostics. Click on "I/O Port". If the set base address is not displayed, it is then free. If it is occupied by another device, you have to set a new base address through the block of DIP switches of the board. Please refer to the technical manual of the board.
  3. Select a free interrupt line and if required set it through jumpers (See technical manual of the board for more information).
  4. Insert the first board.
  5. Start the PC.
  6. Insert the CD1 "Standard Software Drivers" in the CD drive.
  7. In Windows-Explorer open the [boardname]-setup.htm<sup>1</sup> file under CD/[boardname]<sup>2</sup>.
  8. Install the ADDIREG configuration program by clicking on "Installation of ADDIREG from CD-ROM".

The installation program starts.

**In case ADDIREG is already installed on your PC, you have to:**

- uninstall the current ADDIREG version and manually install the latest version from the CD1 or
  - cancel the installation process.
9. If the message "Der Keyboard Kernel wurde noch nicht gestartet, ... soll der Kernel jetzt gestartet werden?" (Problem when installing the system) is displayed by starting the program,
    - remove the ADDIREG program through Start/Settings/Control panel/ Add or remove programs and install ADDIREG anew.
  10. Proceed as indicated and close the installation program with "Finish".
  11. Register the board in ADDIREG
    - Start ADDIREG through start/programs/ADDIREG
    - Insert the selected board through "Insert"
    - Register the board with "Set" and then "Save".

You will find further information about ADDIREG and the board registration in the technical manual of your board.

---

<sup>1</sup> for example: Pa2000-setup.htm for the PA 2000

<sup>2</sup> for example: CD/Pa2000 for the PA 2000

12. Close ADDIREG with "Quit".
13. Open the [boardname]-setup.htm file and install the driver for Windows NT 4.0 by clicking on "Driver for Windows XP/2000/NT4.0/98".

The board is ready to operate.

## 2.3 Installation under Windows XP/2000/98

1. Switch off the PC.
2. The base address set on the board must free on the PC. (See technical manual of the board).  
To check it start the device manager under Start/Settings/Control Panel/System/Hardware. Set the view to "resources by type". If the set base address is not displayed in "input/output", it is then free. If it is occupied by another device, you have to set a new base address through the block of DIP switches of the board. Please refer to the technical manual of the board.
3. Select a free interrupt line (like step 2 and check in "interrupt request") and if required set it through jumpers (See technical manual of the board for more information).
4. Insert the board in the PC.
5. Start the PC.
6. Insert the CD1 "Standard Software Drivers" in the CD drive and proceed as indicated by the Hardware Assistant.
7. In Windows-Explorer open the [boardname]-setup.htm<sup>1</sup> file under CD/[boardname]<sup>2</sup>.
8. Install the ADDIREG configuration program by clicking on "Installation of ADDIREG from CD-ROM".

### **In case ADDIREG is already installed on your PC, you have to:**

- uninstall the current ADDIREG version and manually install the latest version from the CD1 or
  - cancel the installation process.
9. Follow the instructions given by the program and close all open windows with "Finish"
  10. Register the board in ADDIREG
    - Start ADDIREG through start/programs/ADDIREG
    - Insert the selected board through "Insert"
    - Register the board with "Set" and then "Save".

You will find further information about ADDIREG and the board registration in the technical manual of your board.

11. Close ADDIREG with "Quit".

---

<sup>1</sup> for example: Pa2000-setup.htm for the PA 2000

<sup>2</sup> for example: CD/Pa2000 for the PA 2000

- 12.** Open the [boardname]-setup.htm file and install the driver for Windows XP/2000/98 by clicking on "Driver for Windows XP/2000/NT4.0/98" and follow the instructions of the installation program.
- 13.** Close all open windows.
- 14.** Start the PC again.

The installation is completed. The board is ready to operate.

## 3 INSTALLATION OF SOFTWARE SAMPLES

### 3.1 Delivered software

◆ **Change to the CD drive.**

Under CD/[boardname]<sup>1</sup> open the [boardname]<sup>2</sup>-setup.htm file and select the wished software samples. Follow the instructions given by the installation program.

◆ **Select the required programming language.**

Further instructions are given by the installation program.

After installing the board you can install the wished samples at any time. They are stored in:

**CD/[Boardname]/Samples/[Programminglanguage]/Disk1.**

On your PC the software samples are then stored in  
ADDIDATA/16bit/[Boardname]/[Programminglanguage] or  
ADDIDATA/32bit/[Boardname]/[Programminglanguage].

---

<sup>1</sup> for example: CD/Pa2000 for the PA 2000

<sup>2</sup> for example: Pa2000-setup.htm for the PA 2000

## 4 UPDATE OF THE DRIVERS AND PROGRAMS

Should you download the latest drivers from our website or receive files from our hotline service, you have first to uninstall the current version from your PC.

Remove the software with the uninstall program of your operating system.

You find this function under:

- Start/(Settings/)Control Panel/Add or remove programs

Select the board driver or program (e.g. ADDIREG) and click on "Remove". Proceed as indicated by the uninstall program.

Install the new version from your data carrier according to the installation instructions which correspond to the used operating system (see former paragraphs).

## **5 UNINSTALLING THE SOFTWARE**

### **5.1 Uninstalling drivers and programs**

You can uninstall the wished program through the "Uninstall" function of your operating system.

It is to be found in:

- Start/(Settings/)Control panel/Add or remove programs.
- Select the board driver or a program and click on "Remove". Further information for uninstalling the programs are displayed.

### **5.2 Clear the registration of a communication board**

#### **5.2.1 Clear the registration under Windows NT**

Start ADDIREG and select the board to be cleared.

A single board is cleared with "Clear".

If you want to clear all boards, click on "Deinstall registration". (See the corresponding paragraph in the technical manual of the communication board)

#### **5.2.2 Clear the registration under Windows XP/2000/98**

Open the Device Manager under Start/(Settings/)Control panel/System and click on the board to be deleted and proceed as indicated until the board is no more displayed.