

Quick installation

MSX-E3701 and MSX-E3700

Ethernet I/O module for length measurement

The following leaflet informs you about the most important steps for easy commissioning of your Ethernet I/O module. Please find more detailed information in the delivered manual.

Overview



Connecting the Ethernet I/O module

After having read the safety precautions (yellow leaflet), connect your Ethernet I/O module as follows:

- A) Connect the transducers
 - B) Connect the Ethernet cable to the Ethernet I/O module and the PC
 - C) Connect the cable for trigger/synchro signals to the Ethernet I/O module (optional)
- Start your PC -**
- D) Connect the current supply cable (MSX-E3701) or current supply binder (MSX-E3700) to the Ethernet I/O and current source
 - E) Check the status with the help of the LED display

Power On:	- lights green	= Current supply is OK
Port 0 ACT/Link:	- blinks yellow	= Ethernet cable connected to Port 0
Port 1 ACT/Link:	- blinks yellow	= Ethernet cable connected to Port 1
Status:	- lights green	= Module ready for work
	- lights yellow	= Module is booting
	- lights/blinks red	= Error during booting

As soon as the Status LED lights green, you can start with the software installation.

Connecting the MSX-E3701

Trigger/Synchro

Trigger/Synch Out (female connector, 5-pin, M12)

- Pin 1: Trigger inp. - brown lead
- Pin 2: Trigger inp. + white lead
- Pin 3: Synchro + blue lead
- Pin 4: Synchro - black lead
- Pin 5: Ground grey lead

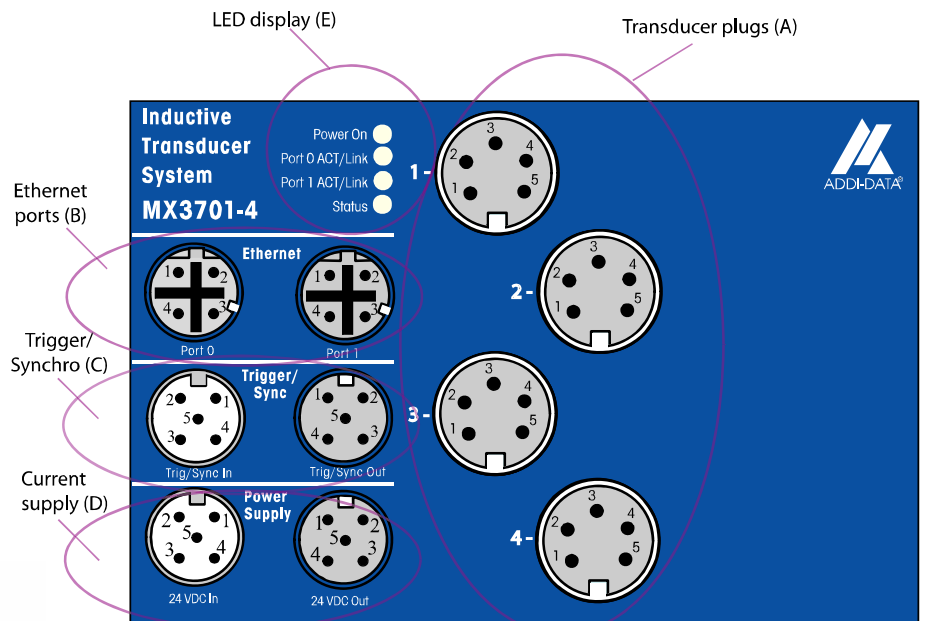
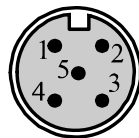
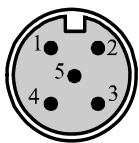
Current supply

Power Output (female connector, 5-pin, M12)

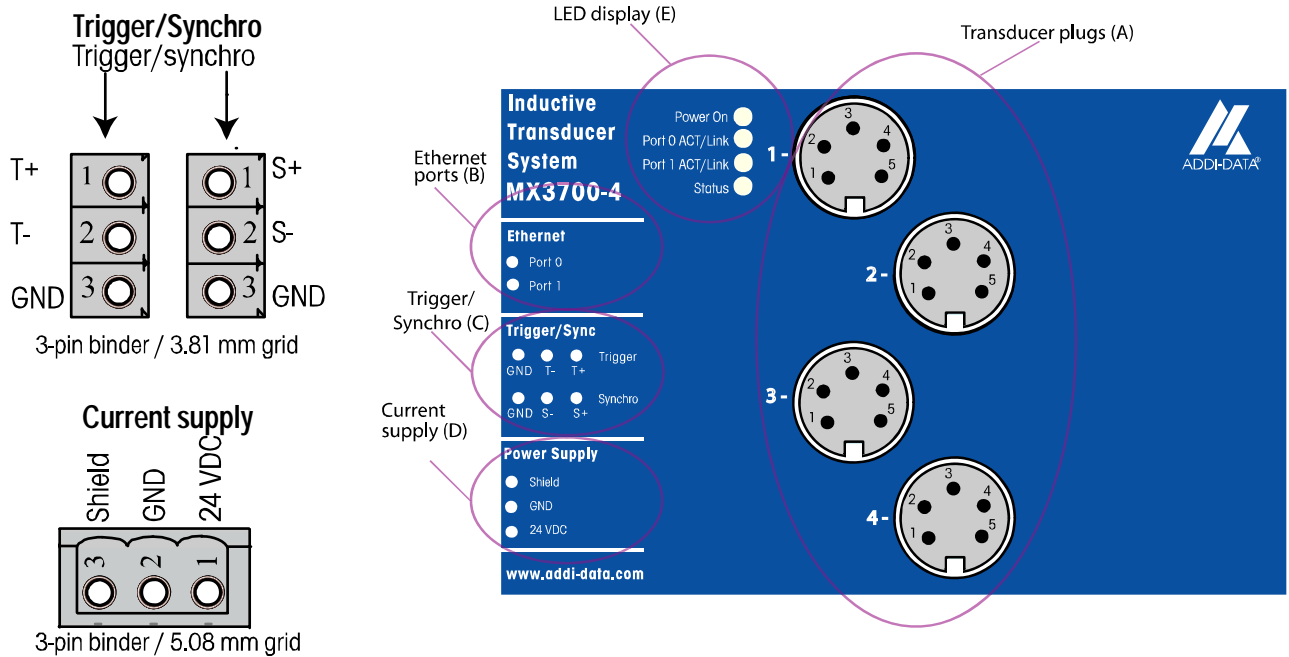
- Pin 1: 24 V brown lead
- Pin 2: 24 V white lead
- Pin 3: Ground blue lead
- Pin 4: Ground black lead
- Pin 5: Shield grey lead

LED display (E)

Transducer plugs (A)



Connecting the MSX-E3700



Installing the software

After having connected the required components and having ensured the current supply, continue as follows:

- Install and start SET3701 (CD1 Standard Drivers) and adapt there the IP address of the module to your network (see next page)

Option 1: Use with direct access:

No further software installation: See technical description for further information

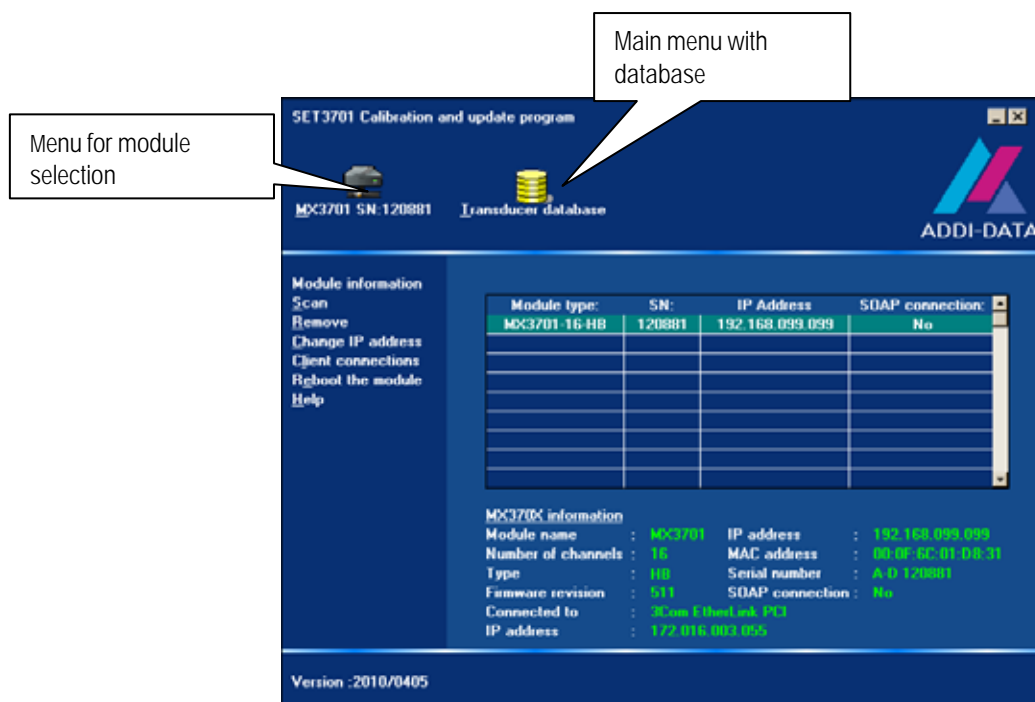
Option 2: Use with ADDIPACK:

- Install ADDIPACK (CD 1 Standard Drivers)
- Start ADDIREG and insert the module in ADDIREG via „Insert“
- Enter the IP address or the serial number
- Click on „Start Scan“ and wait until the new settings are displayed
- Click on „OK“ as soon as the module has been found
- Now the measurement module is displayed in the ADDIREG main window
- Click on „Set“ and then on „Save“ to integrate the measurement module in ADDIPACK
- Find further information in the ADDevice Manager (click in the ADDIREG main window on „Edit“ and then on „ADDIDriver board manager“)

SET3701

The program **SET3701** allows the easy administration of transducers.

- Install **SET3701** (CD/APCI-3701/SET3701 DISK 1) (is available on CD1 Standard Drivers)
- Start it via "Start/Program/Set3701/Set3701"



Icons of the main menu (enabled by double-click):

Icon "MX3701 SN:xxxxx": For selecting a module

Icon „Transducer database“: For opening the main menu with further program functions

Changing the IP address:

- Click on „Change IP address“
- After having made sure that the address is within the „suggested IP address range“ and that the address is not occupied, enter the address and click on „Set“
- In the main menu "Yes" should be displayed under „SOAP connection"

Searching for a module:

- Click on „Scan“

Should you have questions that you do not find in the manual or on our website (<http://www.addi-data.com>), please contact us by phone or e-mail.